

CYNTHIA-REEVES

212.714.0044 cynthia-reeves.com

SHEN CHEN · GUDRUN MERTES-FRADY · BETH GANZ · JAEHYO LEE · SHONA MACDONALD
LLOYD MARTIN · GEORGE SHERWOOD · LIONEL SMIT · MABEL POBLET



palm beach
MODERN + CONTEMPORARY

BOOTH PB320

Fair hours: Friday - Saturday 11 - 7, Sunday 11 - 6
Preview: Thursday, January 12, 5 - 9pm

SHEN CHEN

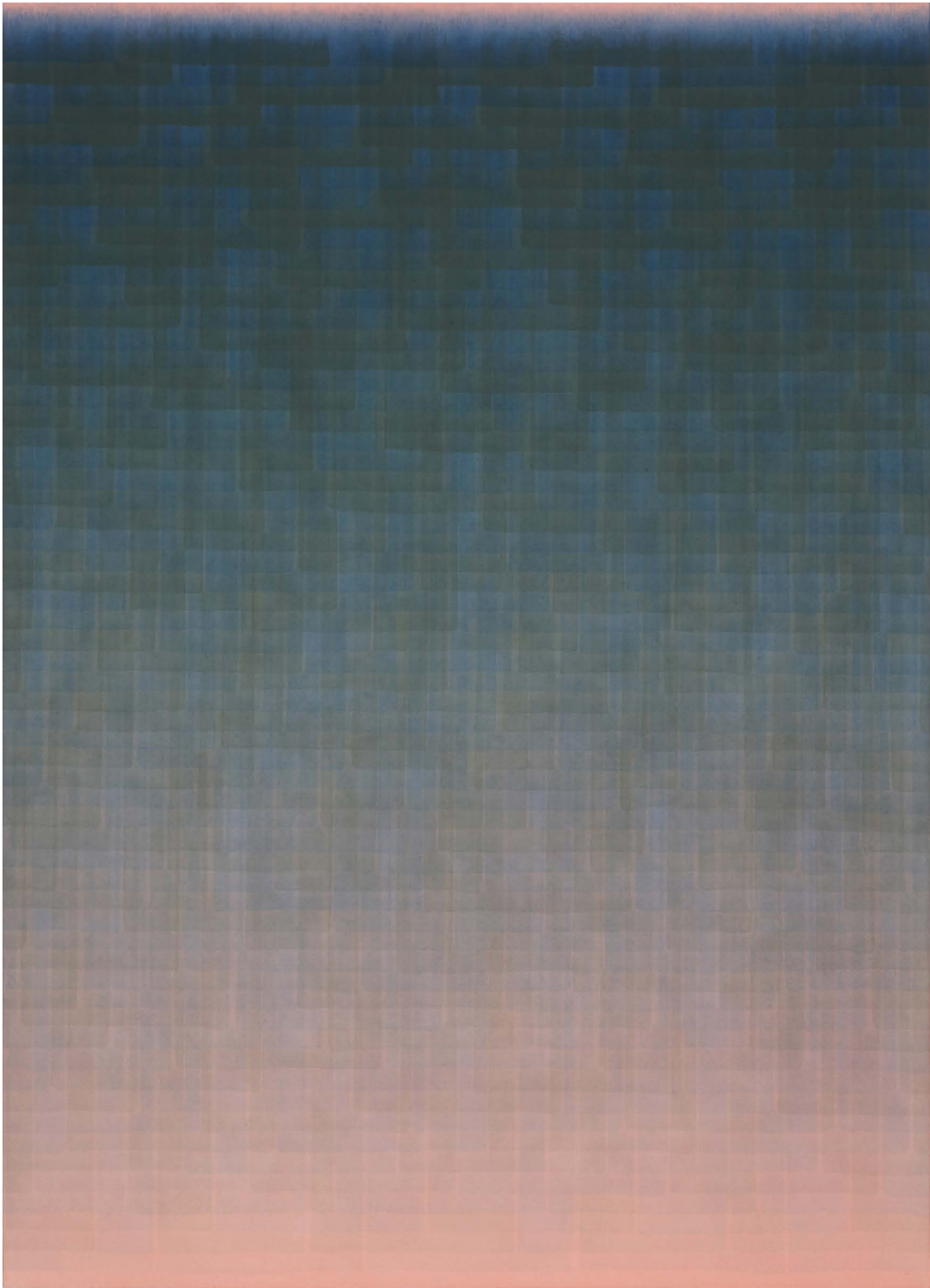


Shen Chen's meticulous layering of color resonates tonal hues, and manifests as a rigorous discipline grounded in a meditation on breath. To create his subtle ombré surfaces, Chen works with the canvas on the studio floor. He layers the paint in precisely calibrated vertical brushstrokes; the discrete horizontal lines visible on the surface are a record of where each brushstroke, and attendant breath, ends.

As art critic Robert Morgan describes, "Chen inhabits the domain of his materials in order to evoke their feeling, to give them a monumental vastness, a space without measure. Chen realized long ago, at the outset of his journey into painting, a discovery whereby the mystic wave of ink became the means to transform the wetness of acrylic into something both ancient and fully modern at the same moment. He knew then that the space of the picture plane was not something given to him. Rather space is what the artist creates – a living, breathing space – that helps deliver what is miraculous in painting".

Overlaying of strokes is an action of negating. I cover paint with paint in order for a painting to dissolve the painting itself. Such dissolution is a long process that involves time and order, stretching from the beginning to the end. Through the very intimate process of 'stroke-laying', the artist thereby enters a void and dismisses all thinking. Such reflection of the inner spirit is a poem of stream of consciousness. The strokes as artworks are but the remainder of the process and the trace of time and spirit. -- Shen Chen

CYNTHIA-REEVES



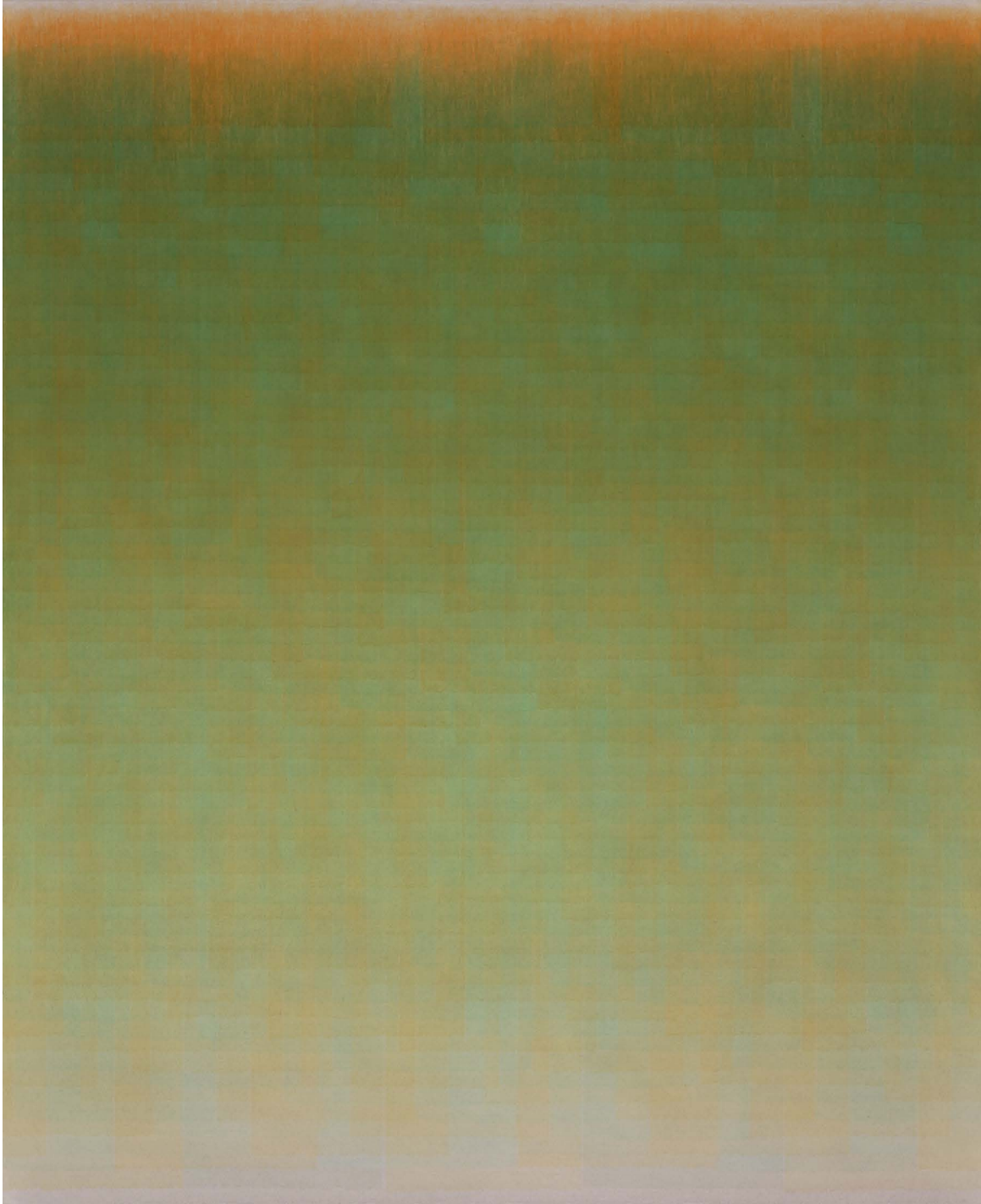
Shen Chen, *11711-15*, 2015, acrylic on canvas, 64 x 46 in; (162.6 x 116.8 cm)

CYNTHIA-REEVES



Shen Chen, *11711-15* (detail), 2015, acrylic on canvas, 64 x 46 in; (162.6 x 116.8 cm)

CYNTHIA-REEVES



Shen Chen, *10177-12*, 2012, acrylic on canvas, 54 x 44 in; (137.2 x 111.8 cm)

CYNTHIA-REEVES



Shen Chen, *10221-09*, 2012, acrylic on canvas, 54 x 44 in; (137.2 x 111.8 cm)

CYNTHIA-REEVES

SHEN CHEN

BORN

1955 Shanghai, China

EDUCATION

1990 MFA, Boston University, Massachusetts
1989 New York Studio School of Painting and Sculpture, New York
1988 Skowhegan School of Painting and Sculpture, Maine
1982 BFA, Shanghai Academy of Theater, Shanghai
1978 Shanghai Art College, Shanghai

SELECT SOLO EXHIBITIONS

2016 Shen Chen, CYNTHIA-REEVES, Walpole, NH
Shen Chen, CANvas International Art, Amsterdam, Netherlands
2014 Shen Chen, CYNTHIA-REEVES, North Adams, MA
Shen Chen – Paintings, Gallery Frank Schlag, Essen, Germany
2013 Shen Chen, Elisabeth de Brabant Art Center, Shanghai, China
Between The Lines, Canvas International Art, Amsterdam, The Netherlands
2012 Shen Chen, Elisabeth de Brabant Art Center, Shanghai, China
Shen Chen, CYNTHIA-REEVES New England, Hanover, NH
Shen Chen, Galerie Frank Schlag, Essen, Germany
2011 Shen Chen: Artworks from the Hangzhou Sanshang Museum, Elisabeth de Brabant Art Center, Shanghai, China
2010 Meteorology: Art of Shen Chen, SanShang Museum of Contemporary Art, Hangzhou, China
Paintings by Shen Chen, Shanghai University Art Center, Shanghai, China
2009 Shen Chen, CYNTHIA-REEVES, New York, NY
2008 Shen Chen, Today Art Museum, Beijing, China
Void but Complete Pictures – Recent Works by Shen Chen, Nantong Art Museum, Jiangsu, China
Recent Works by Shen Chen, SanShang Art Museum, Beijing Gallery, Beijing, China
2006 Shen Chen - Recent Paintings, Gallery 456, New York, NY
1994 Shen Chen – Ink Paintings, Gallery White Art, Tokyo, Japan
1991 Ink of China – Paintings by Shen Chen, Mentor Hair Gallery, Fairfax, VA
1988 Shen Chen, Paintings, National Art Museum of China, Beijing, China

SELECT GROUP EXHIBITIONS

2016 New Hazy Doctrine, Tokyo Gallery, Beijing, China
Research exhibition on Contemporary Chinese Line-School, Epoch Art Museum, Wenzhou, China
Art San Francisco, Nanhai Art Gallery, San Francisco, USA
2015 Paper Theatre, Pearl Lam Gallery, Shanghai, China
Abstract Painting from Chinese, Galerie Frank Schlag, Essen, Germany
An Exhibition in Celebration of Shanghai Academy of Theater 70th Anniversary, Dorgan Museum, Shanghai, China
Abstract Art from China, Galerie Frank Schlag, Essen, Germany
Art Basel, Canvas International Art. Switzerland
Pan Amsterdam, Canvas International Art. the Netherlands
Art Rotterdam, Canvas International Art. the Netherlands
Amsterdam Drawings, Canvas International Art. the Netherlands

CYNTHIA - REEVES

SELECT GROUP EXHIBITIONS (continued)

- 2015 Art Chicago, Pearl Lam Gallery, Chicago USA
Korea International Art Fair, Pearl Lam Gallery, Seoul, South Korea
China International Gallery Exhibition, Pearl Lam Gallery, Beijing China
Art Miami, Cynthia Reeves, Miami USA
- 2014 Contemporary Chinese Ink Art since 1980s-Experiment Transformation", Himalayas Museum, Shanghai/Goddess Art Museum, New York
Contemporary Art from Asia, Bohemian National Hall, New York
Art Miami, CYNTHIA-REEVES, Miami, FL
Art Silicon Valley/San Francisco, CYNTHIA-REEVES, San Mateo, CA
The Supremacy of Invisible – Chinese Abstract Paintings, Museum Hurrle, Durbach, Germany
A Fragment in the Course of Time, Landscape of Chinese Ink Art in the 1980s, Himalayas Museum, Shanghai, China
Another Utopia, Abstract Art Shanghai, Mingyuan Museum, Shanghai, China
Downtown Art Fair, CYNTHIA-REEVES, New York, NY
- 2013 The Solo Project, CYNTHIA-REEVES, Basel, Switzerland
Art13, CYNTHIA-REEVES, London, United Kingdom
Asian Contemporary Art from China, Japan and Korea, Galerie Frank Schlag, Essen, Germany
Art Wynwood International Contemporary Art Fair, CYNTHIA-REEVES, Miami, FL
- 2012 Germany/China Abstract Painting Today, Wile SE, Dortmund, Germany
Germany/China Abstract Painting Today, Wile SE, Beijing, Germany
artMRKT San Francisco, CYNTHIA-REEVES, San Francisco, CA
Chinese Abstract (Slow) Art, Kunsthalle Recklinghausen, Recklinghausen, Germany
Liang Hong Feng and Shen Chen, Monika Olko Gallery, Sag Harbor, NY
Change, Yuan Art Museum, Beijing, China
- 2011 Buddha's Trace, Kunstmuseum Bochum, Bochum, Germany
Chinese Abstract Slow Art, Singer Laren Museum, The Netherlands
SOFA New York, CYNTHIA-REEVES, New York, NY
China Abstract Painting Now, Galerie Frank Schlag & CIE., Essen, Germany
artMRKT San Francisco, CYNTHIA-REEVES, San Francisco, CA
TX Contemporary, CYNTHIA-REEVES, Houston, TX
Breathing, Curated by Soojung Hyun, Sylvia Wald & Po Kim Art Gallery, New York, NY
- 2010 Here & Now: Chapter III Towards Transculturalism, Curated by Zhijian Qian, Museum of Chinese in America (MOCA), New York, NY
Coincidental Opposites, Causey Contemporary, Brooklyn, NY
Art Miami International Contemporary & Modern Art Fair, CYNHTIA-REEVES, Miami, FL
- 2009 Contemporary Ink Painting, Doulon Museum of Modern Art, Shanghai
How Chinese, Gallery 456, New York, NY
Remembering how the air shimmers- Abstract Art by Three artists, 1918 Art Space, Shanghai, China
The Power of Contemporary Chinese Abstraction, Ta Shi Museum of Art, Macau
Re-exam modernism, Xi Hu Museum of Art, Zhe Jiang, China
- 2008 Turn to Abstract -- A Retrospective of Shanghai Experimental Art 1976-1985, Zhendai Museum of Modern Art, Shanghai, China
Quiet Quest: Realism to Abstraction - An Exhibition of Chinese Abstraction 2, One Moon Gallery, Beijing, China
Works by Three Artists, East Link Gallery, Shanghai, China
Qi Yun - An International Traveling Exhibition of Chinese Abstraction 2, China Square Gallery, New York, NY
- 2007 Art Beijing, Presented by One Moon Gallery, National Agricultural Exhibition Center, Beijing, China
Qi Yun-An International Traveling Exhibition of Chinese Abstraction 1, Hexiangning Museum

GUDRUN MERTES-FRADY

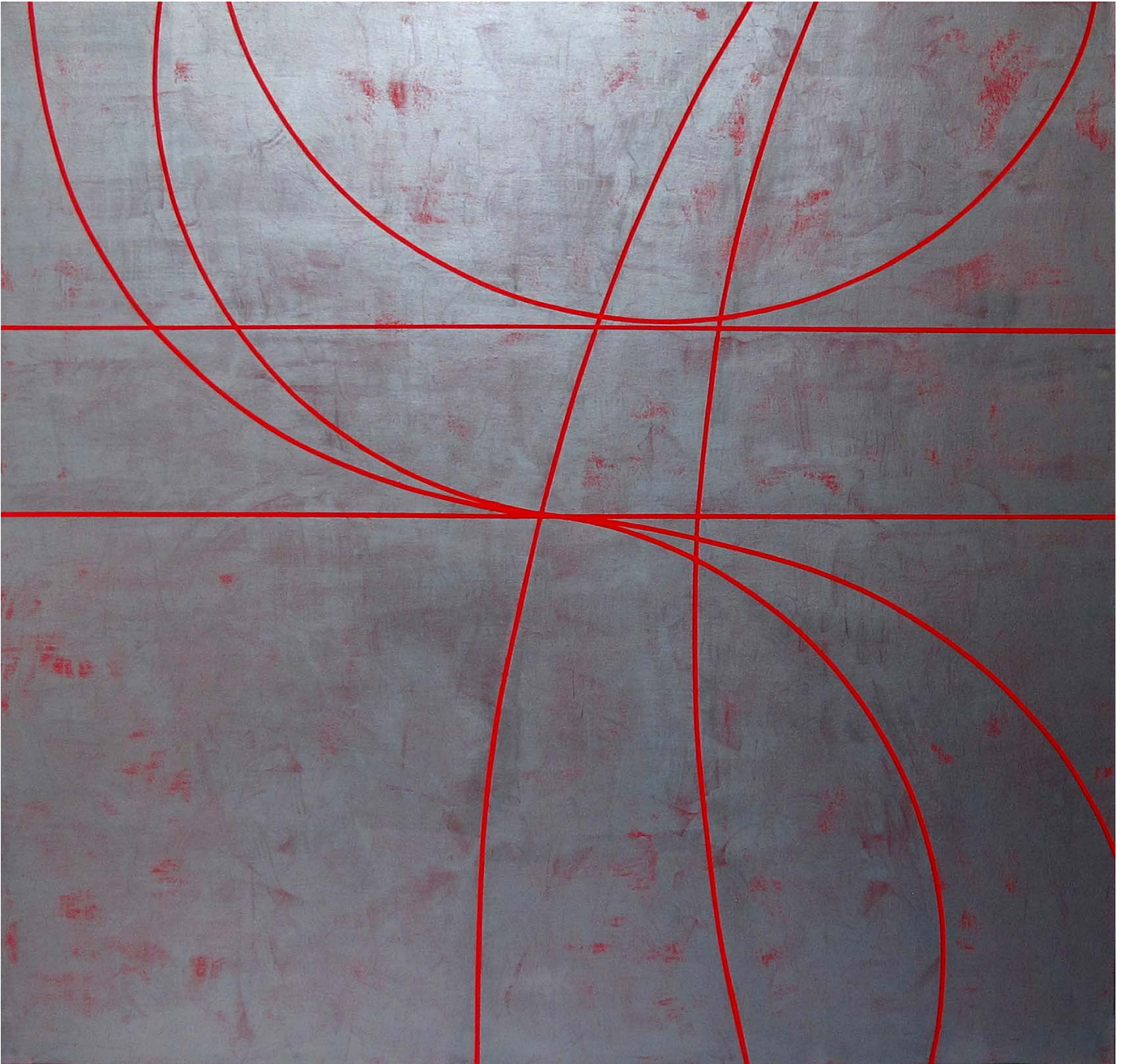


Gudrun Mertes-Frady's grounding principals are clarity and structure, pared down to essential forms. As a timeless organizing principle, geometry is consistently the underlying matrix or architecture. From that matrix, she bends the lines to create a spatial reference, teasing apart the structure of her paintings. This quasi-symmetry is served well by her attention to the surfaces. Some are matte and austere -- the better to highlight the precise curved lines of the spaces she defines with authority. Others have a rich and luscious surface, which create a layering of soft, open spaces behind curvilinear marks. It is a beautiful foil, these deftly rendered contained spaces laid over a soft, undulating chromatic field.

Mertes-Frady has long incorporated metallic pigments, like aluminum and graphite, into her oils on canvas, as well as works on mylar and paper. Mica particles mixed in with the oil and pigments enhance that reflectivity, and shift one's perception of the painting's coloration as light moves across its surface. This is a deft way of challenging further her symmetries, as light plays tricks with the changing color aspects of the painting.

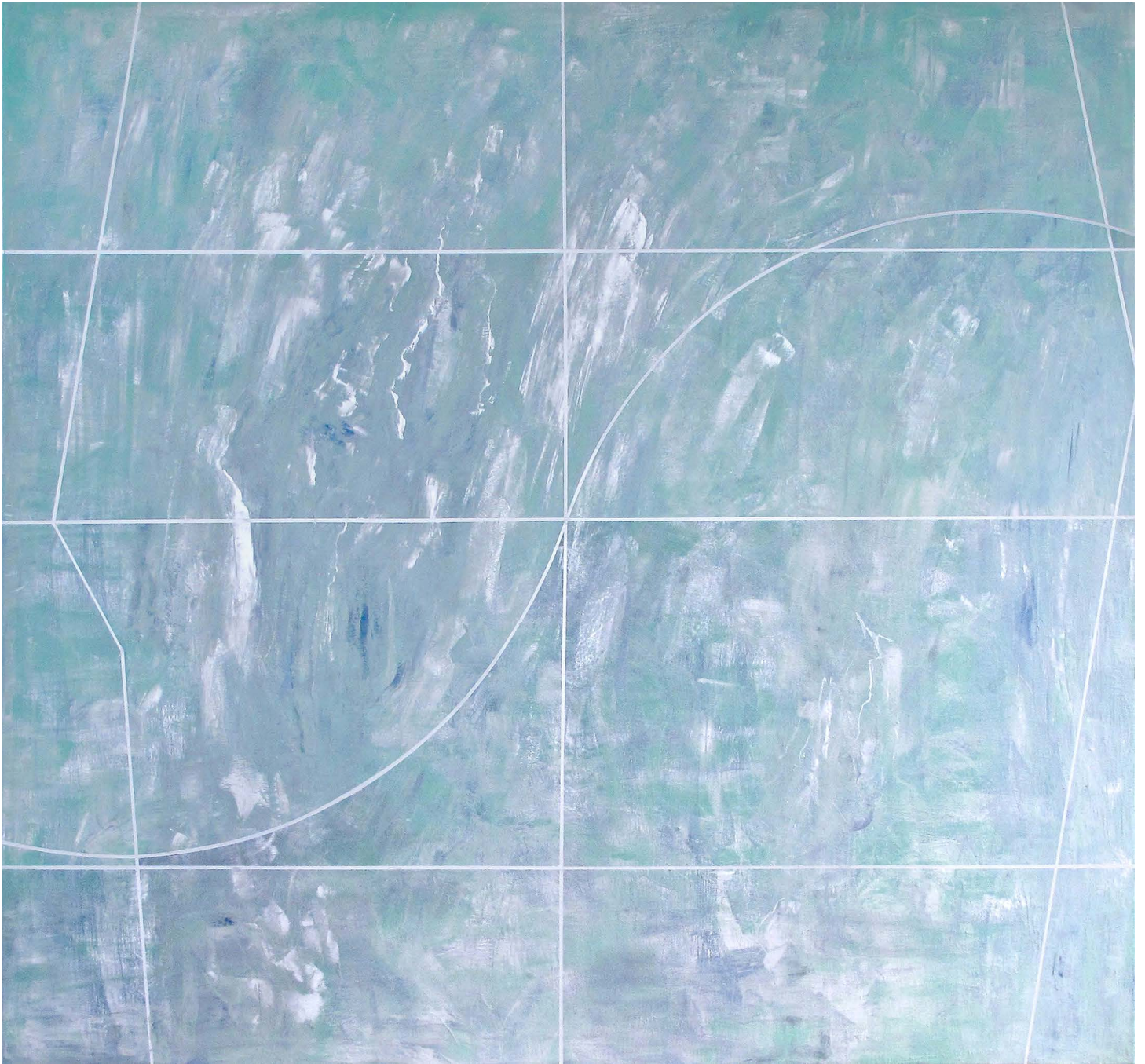
I'm very interested to explore physical fact and psychic effect of color and form with this process. I work toward the instant the painting has its own center, its own logic, physically and intellectually. Most of all I want my work to be about deceleration, in the spirit of the works by Olafur Eliasson and the Swiss architect Peter Zumthor, as a counterpoint to the ever accelerating whirl of our time, in which our lives seem trapped. And there is one more thing of importance to me: I'm going blatantly for a sense of beauty. -- Gudrun Mertes-Frady

CYNTHIA-REEVES



Gudrun Mertes-Frady, *Celebration*, 2015, oil and metallic paint on canvas, 60 x 63 in; (152 x 160 cm)

CYNTHIA-REEVES



Gudrun Mertes-Frady, *The Waves*, 2015, oil and metallic paint on canvas, 60 x 64 in; (152 x 162.6 cm)

GUDRUN MERTES-FRADY

BORN

Born in Cologne, Germany

Lives and works in Brooklyn, NY

SELECT SOLO EXHIBITIONS

- 2016 Markel Fine Arts, New York, NY
- 2015 Cynthia Reeves, MASS MoCA Way, North Adams, MA
- 2014 Michael Trierweiler Contemporary Art, Weimar, Germany
- 2013 Mark Wolf Contemporary, San Francisco, CA
- 2010 Piquion+Trierweiler, Weimar, Germany
ART Karlsruhe, Karlsruhe, Germany
- 2009 Maud Piquion, Berlin, Germany
Cynthia-Reeves, New York, NY
- 2007 Reeves-Contemporary, New York, NY
Spheris Gallery, Hanover, NH
- 2005 Reeves-Contemporary, New York, NY
- 2003 Rosenberg + Kaufman Fine Art, New York, NY
- 2002 Rosenberg + Kaufman Fine Art, New York, NY
- 2000 Rosenberg + Kaufman Fine Art, New York, NY
- 1999 Rosenberg + Kaufman Fine Art, New York, NY
- 1997 Rosenberg + Kaufman Fine Art, New York, NY
- 1995 Rosenberg + Kaufman Fine Art, New York, NY
- 1994 Stephen Rosenberg Gallery, New York, NY
- 1992 Stephen Rosenberg Gallery, New York, NY
- 1991 Galerie Lommel, Cologne-Leverkusen, Germany

SELECT GROUP EXHIBITIONS

- 2016 "Transformation and Renewal", Art in Embassies, Bandar Seri Begawan, Brunei
Sideshow Nation III, Sideshow Gallery, Brooklyn, NY
- 2015 August Geometry, Maria Wood Gallery, Atlanta, GA
Art in Embassies, Bandar Seri Begawan, Brunei
Sideshow Nation III, Sideshow Gallery, Brooklyn, NY
Paperazzi, Janet Kurnatowski Gallery, Brooklyn, NY
- 2014 Paper Show, Janet Kurnatowski Gallery, Brooklyn, NY
Sideshow Nation II, Sideshow Gallery, Brooklyn, NY
- 2013 Sideshow Nation, Sideshow Gallery, Brooklyn, NY
- 2012 Paper Bands, Jason MCCoy Gallery, New York, NY
Kentler International Drawing Space, Brooklyn, NY
Mic : Check, Sideshow Gallery, Brooklyn, NY
- 2011 Mark Wolf Contemporary, San Francisco, CA
Divergent Affinities, Wexler Gallery, Philadelphia, PA, curated by Barbara Harberger
- 2008 Nuture Art Benefit, curated by Lilly Wei, James Cohan Gallery, New York, NY
Small Works Show, 80 Washington Square Galleries, New York, NY
- 2007 Reeves-Contemporary, New York, NY
- 2005 Spheris Gallery, Hanover, NH
- 2003 A Common Thread, Hennepin County Government Center, Saint Paul, MN
- 2002 Here is New York, Corcoran Gallery, Washington, DC
Here is New York, Les Recontres d'Arles, Arles, France
Here is New York, Martin Gropius-Bau, Berlin, Germany

CYNTHIA - REEVES

SELECT GROUP EXHIBITIONS (continued)

- 2002 Here is New York, Museum of Modern Art, New York, NY
Here is New York, Chicago Cultural Center, Chicago, IL
Here is New York, University of California, Berkley, CA
- 2001 Synopsis, Rosenberg + Kaufman Fine Art, New York, NY
Art 2001, e1 Gallery, London, England
- 2000 Sun Signs, Rosenberg + Kaufman Fine Art, New York, NY
(Un)Resolved, Rosenberg + Kaufman Fine Art, New York, NY
- 1996 Art Initiative Gallery, New York, NY Group exhibition, curated by Stephen Rosenberg
- 1994 Summer Solstice, Stephen Rosenberg Gallery, New York, NY curated by Fran Kaufman
- 1993 Cadavre Exquis, The Drawing Center, New York, NY
The Tenth Summer, Stephen Rosenberg Gallery, New York, NY

SELECTED PUBLIC COLLECTIONS

The Busch Reisinger Museum, Harvard University, Cambridge MA
Art in Embassies, Permanent Collection US Consulate Dubai, UAE
The Rockefeller University, New York, NY
Collection Werner Kramarsky, New York, NY
Universal Music, London, England
Collection Gwyneth Paltrow, NY
Cohen & Lord, Santa Monica, CA
Robins, Kaplan, Miller & Ciresi, Minneapolis, MN
Kurt Solomon Associates International
Princess Cruise Lines, Los Angeles, CA (commission)
Thomas Weisel Partners, San Francisco, CA
Collection at Coventry, Fort Washington, PA
GENSLER Project, Miami, FL
50 UN Plaza, NY

SELECT BIBLIOGRAPHY

- 2016 Charles A. Riley II, Hamptons Art Hub, August 31
- 2015 Jerry Cullum, Arts Atlanta, Atlanta, GA, August 26
- 2011 Edith Newhall, Philadelphia Inquirer, Philadelphia, PA, January 17
- 2009 Martin Stolzenberg, TLZ, Weimar, Germany, December 9
Andrea Hilgenstock, Die Welt, Berlin, Germany, November 17
Jens Hindrichsen, Der Tagesspiegel, Berlin, Germany, November 3
- 2007 Constance Wyndham, Artnews, May
Mario Naves, Catalogue Essay, Reeves-Contemporary
Joseph Wallentini, Review, Abstract Art On Line, April
- 2004 Edward Leffingwell, Art in America, May
- 2003 Ann Landi, ARTnews, December
Mario Naves, New York Observer, October 1
- 2002 Lilly Wei, Catalog Essay, Rosenberg+Kaufman Fine Art, NYC
- 2000 Ken Johnson, The New York Times, November 3
Joseph Wallentini, Review, Abstract Art on Line, November
- 1999 Joseph Wallentini, Artist Profile, Abstract Art on Line, June
Jeannie Wilkinson, Catalogue Essay, Rosenberg + Kaufman Fine Art, NYC
Joseph Wallentini, Artist Profile, Abstract Art on Line, June
- 1997 Lissa McClure, Review Magazine
Arlene Raven, Catalog Essay, Rosenberg+Kaufman Fine Art, NYC

CYNTHIA - REEVES

BETH GANZ

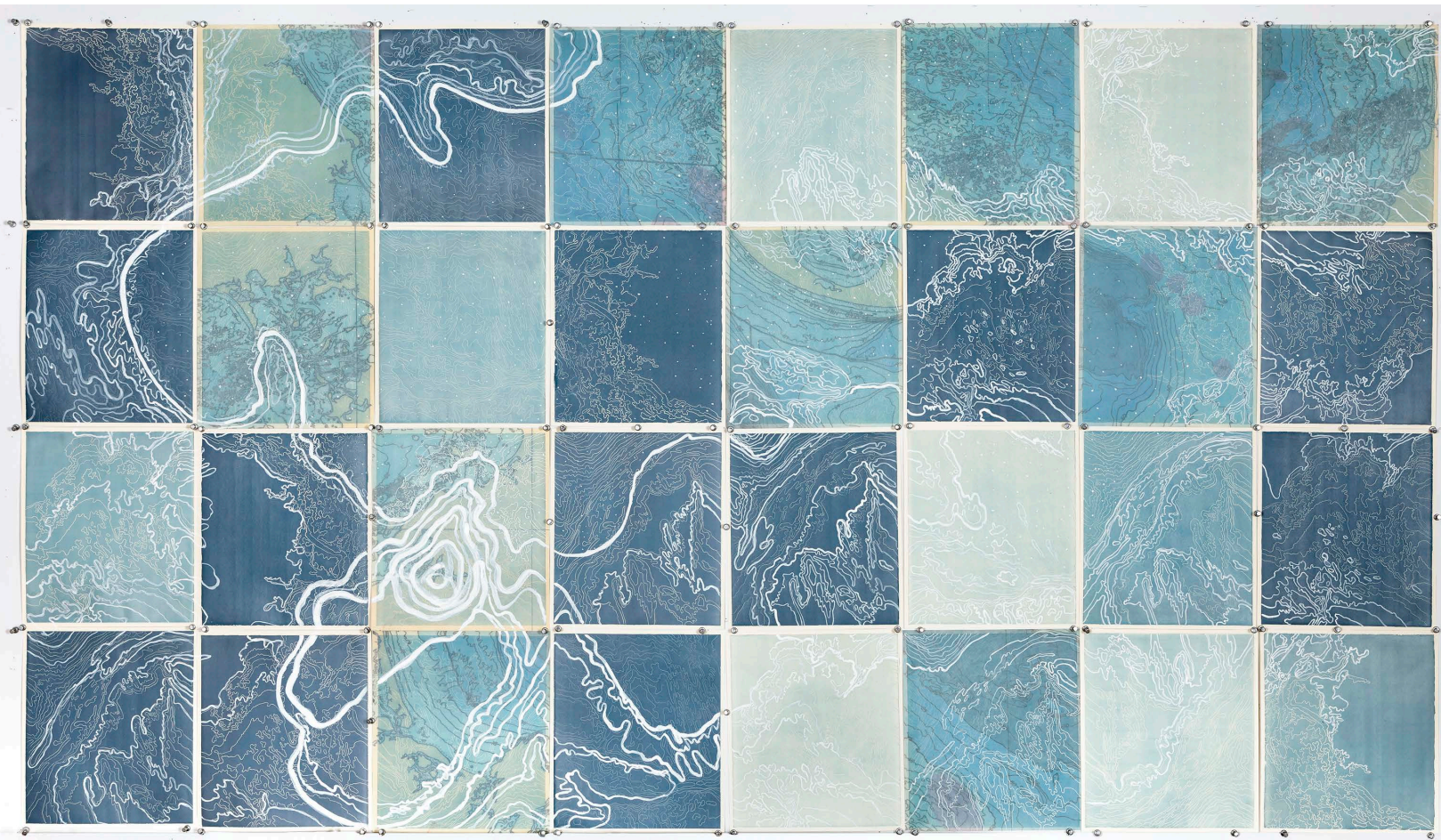


Beth Ganz's new work is a response to her ongoing inquiry into topography, line, and shape that arise from interstitial spaces. Her reliefs are depicted in both the negative and positive, in all the various techniques she employs: gravure, photography, line drawing, montage. A recent series of hand-painted maps interjects an element of historical exploration and emphasizes the flux between the surface of the image and the photograph's illusory depth. Each of her works is an invitation to a historical legacy, offering a window onto another world.

Her images are both supported and disrupted by the play between negative and positive, surface and depth, landscape image and map-like painted detail. Her use of fragile kozo paper in conjunction with the weight and mass of the topographies serves the artist's intent well: the collaged reverse imagery becomes a finely honed dance of mirror image shapes.

Ganz has had several solo exhibitions in New York and throughout the United States; her prints have been included in many group shows in the United States, England, Europe, and India a country and a landscape that has become her muse and touchstone for the past decade.

CYNTHIA-REEVES



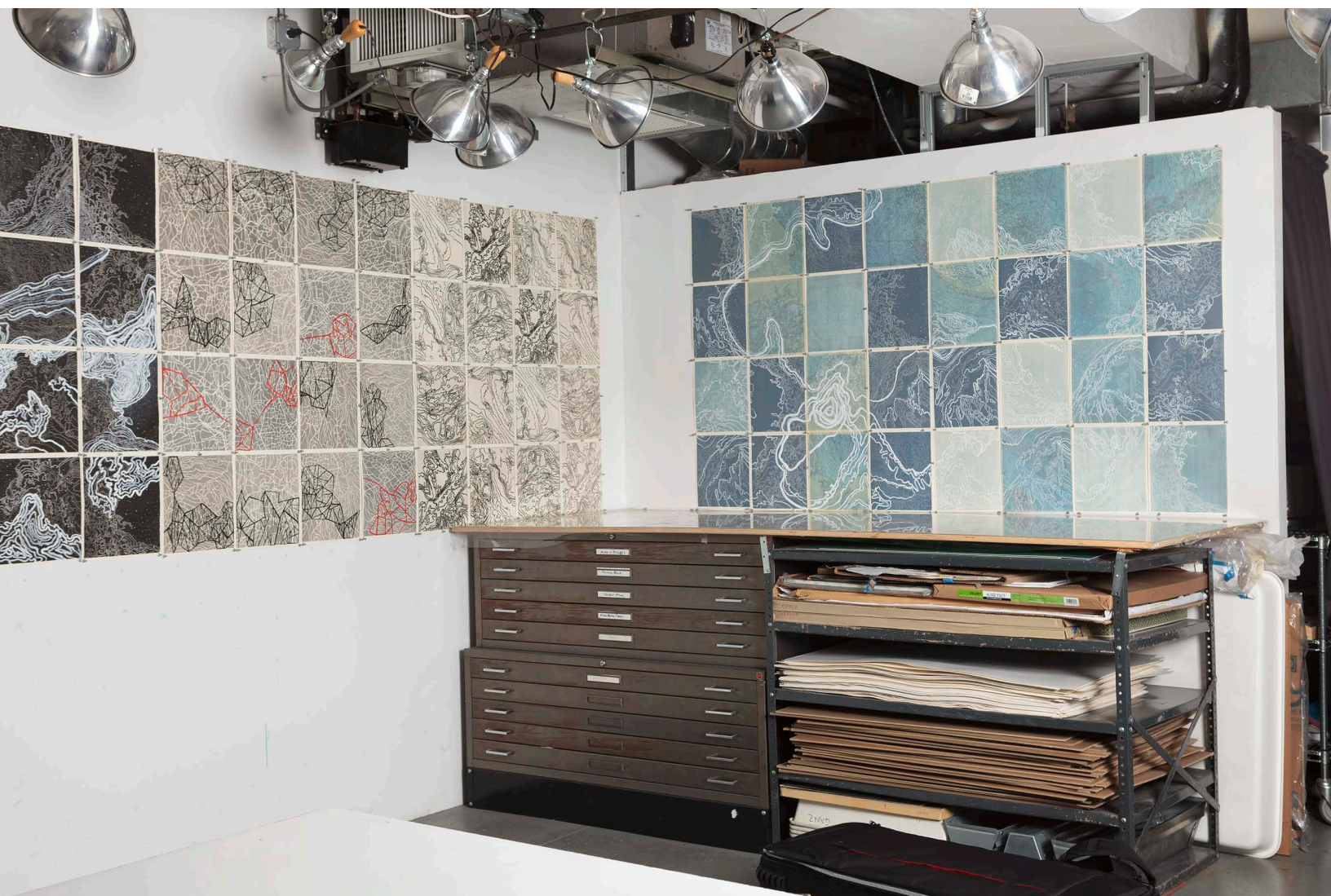
Beth Ganz, *Celestial Navigation*, 2016

CYNTHIA-REEVES



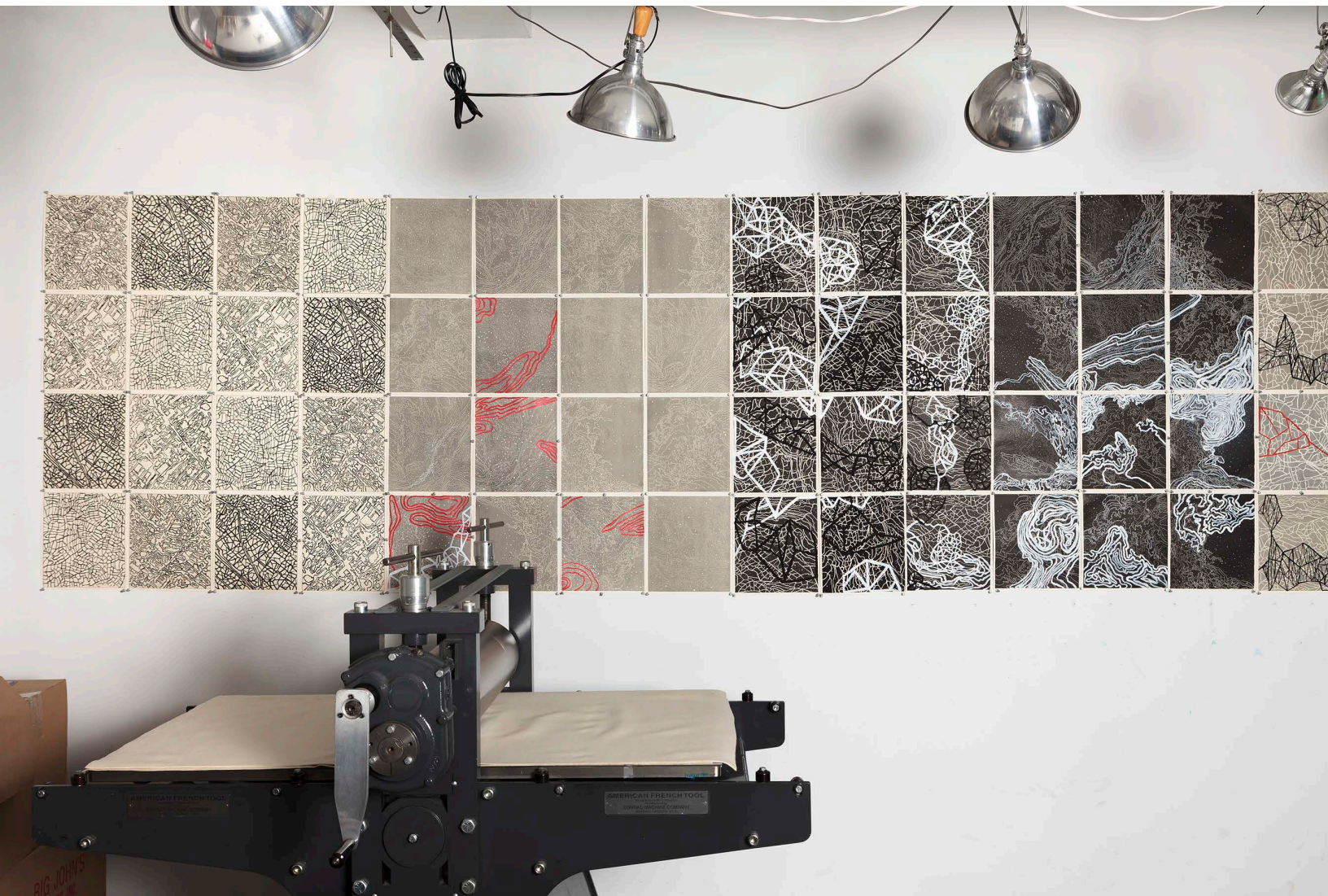
Beth Ganz, *Celestial Navigation (detail)*, 2016

CYNTHIA-REEVES



Beth Ganz, *Atlas Project* and *Celestial Navigation*, 2016, work in studio

CYNTHIA-REEVES



Beth Ganz, *Atlas Project*, 2016, work in studio

CYNTHIA-REEVES

BETH GANZ

EDUCATION

1982-85 National Academy, New York, Painting and Drawing

1967-72 Pratt Institute, New York, Bachelor of Fine Arts

SELECT SOLO AND TWO PERSON EXHIBITIONS

2015 *Beth Ganz, Grids, New Painting And Prints*, CYNTHIA-REEVES, The Barn, Walpole, NH

2010 *Beth Ganz And Jerry Eisenberg*, Spheris Gallery, Hanover, NH

2009 *Beth Ganz And Jaehyo Lee*, Spheris Gallery, Hanover, NH

2007 *Geothermal Topographies*, Reeves Contemporary, New York City, NY

Beth Ganz, Spheris Gallery, Hanover, NH

2006 *High Latitude*, Afp Gallery, New York City, NY

2004 *Recent Work: Photogravure And Collage*, Manhattan Graphic Center, New York City, NY

SELECT GROUP EXHIBITIONS

2016 *Celebrating Print*, Bnh Gallery, Dec 7- Jan 13, New York City, NY

2015 *Art Miami*, Cynthia-Reeves Projects, Miami, Florida, Dec

Enchanted Landscapes, German Romantic And Contemporary Prints, The Curator Gallery, New York City, NY

And So It Grows, MGC Gallery, New York City, NY

2014 *Hilton Head Health*, Hilton Head, SC

Big Picture Show, 1285 Avenue of the Americas Gallery, UBS/ICPNY, New York City, NY

Gravure Contemporaine, Gallerie Brun Leglise, Paris, France

2013 *Unbounded*, Hollar Gallery, Prague, Czech Republic

Art Southampton, Cynthia-Reeves Booth, South Hampton, NY

Working It Out, The Painting Center, New York City, NY

Connectivity, McColl Center, Charlotte, NC

New Delhi/New York, 4 Artists from New York, Delhi, India

2012 *Instructors At Manhattan Graphics Center*, New York City, NY

Confrence Of The Birds, Mana Contemporary, Newark, NJ

New Prints – Winter, IPCNY, New York City, NY

Multiple Encounters 2, Lalit Kala Akademi, Delhi, India

2011 *Art Miami*, CYNTHIA-REEVES PROJECTS

Think, Boston Printmakers, Boston, MA

9/11, The Siren's Song Gallery, Greenport, NY

9/11 Portfolio, Prints from Manhattan Graphics Center, Otterbein University Gallery, Westerville, OH

San Fransisco Art Mart, Cynthia-Reeves Projects

Groundwork, Storefront Gallery, Brooklyn, NY

2010 *Selected Artist - Efa Studios*, Elizabeth Foundation for the Arts, New York City, NY

Think, Boston Printmakers Members Show, Zullo Gallery, Medfield, MA

Out Of The Dark, Manhattan Graphics Center Project Space, New York City, NY

2009 *Slow News International*, The Arts at Mark's Garage, Honolulu, HI

Works On Paper, Park Avenue Armory, New York City, NY

In The Absence, Spheris Gallery, Hanover, NH

Selected Work, Grafisch Atelier Daglicht, Eindhoven, Holland

2008 *52Nd Annual Hunterdon Art Museum Print Exhibition*, Hunterdon, NJ

Great Rivers Arts Faculty, Spheris Gallery, Hanover, NH

2007 *Summer Show*, Amy Simon Fine Art, Westport, CT

2006 *New Prints/Winter*, International Print Center New York, New York City, NY

CYNTHIA - REEVES

SELECT GROUP EXHIBITIONS (continued)

- 2006 *50Th Annual National Print Exhibition*, Hunterdon Museum of Art, Clinton, NJ
The New Landscape: Alternative Approaches, Danforth Art Museum, Framingham, MA
- 2005 *49Th Annual Hunterdon Art Museum Print Exhibition*, Clinton, NJ
Boston Printmakers North American Print Biennial, Boston, MA
New Prints/Spring 2005, International Print Center New York, New York City, NY
- 2004 *48Th Annual Hunterdon Art Museum Print Exhibition*, Clinton, NJ
Time Remembered/Time Past, Boston Printmakers, Duxbury, MA
Multiple Encounters, Indira Gandhi National Centre for the Arts, New Delhi, India
- 2003 *9/11 Portfolio*, New York Historical Society, New York City, NY
- 2002 *Reactions*, Exit Art, New York City, NY
Reactions, Witness And Response, Library of Congress, Washington, DC
Life Of The City, Museum of Modern Art, New York City, NY
Prints From Manhattan Graphics Center, Sandomierz, Poland, Budapest, Hungary; Kiev, Ukraine
New York City Workshops, New York Society of Etchers, New York City, NY
September 11, Memorial Portfolio, Manhattan Graphics Center, New York City, NY
Recent Acquisitions, The Library of Congress, Washington, DC
Contemporary Prints, St. John's University, New York City, NY
- 2001 *Bharat Bhauvan International Biennial Of Print Art*, Bhopal Arts Center, India
The Hudson River Project, Hudson River Gallery, Dobbs Ferry, NY
29 Grafikow, Z Manhattan Graphics Center New York, Wojska Polskiego, Poland
29 Gravures New Yorkais À Paris, Galerie Delta, Paris, France
31 Prints By Artists Of MGC, Russell-Cotes Museum, Bournemouth, England

AWARDS

- 2014 Elizabeth Foundation for the Arts Studios
- 2005 Johnson and Johnson Purchase Prize, 49th Annual National Print Exhibition,
Hunterdon Museum of Art, Clinton, New Jersey
- 1999 Juror's Award, Prints USA 1999, Springfield Art Museum, Springfield, Missouri
- 1993 Honorable Mention, 37th Annual National Print Exhibition, Hunterdon Art Center, Clinton, New Jersey
- 1992 Juror's Award, Small Impressions 1992, Printmaking Council of New Jersey

COLLECTIONS

Gabellini Sheppard Associates LLP, New York City, NY
Evelyn Lauder Breast Center at SKMCC, New York City, NY
Duke Energy, Charlotte, N
Legg Mason Management Corporation
Dorchester Group, Hotel Bel-Air, Los Angeles, CA
US Department of State, Art Bank Program, Washington, DC
New York Historical Society, New York City, NY
Library of Congress, Washington, DC
New York Public Library Prints Collection, New York City, NY
Hofstra Museum, Hofstra University, Hempstead, NY
Squib Corporation Collection, NJ
Tommy Hilfiger Corporate Collection, New York City, NY
Johnson and Johnson Corporate Collection, New Brunswick, NJ
United States Embassy Permanent Collection, Tbilisi, Georgia
Permanent Collection of the US Consulate, Cape Town, South Africa
World Trade Center Memorial Museum, New York City, NY
Universal Studios, Los Angeles, CA
Private Collections

CYNTHIA - REEVES

JAEHYO LEE



JaeHyoo Lee has been rethinking and re-envisioning use of quotidian materials for several decades. Rather than dismantling each sculptural component and creating a hybrid aesthetic, Lee's works emphasize his materials' essential nature. The trajectory of his current work reveals his refined approach to nature - addressing simple elements and, from them, creating large scale works of remarkable impact. In his current solo exhibition, *Walking With Nature*, at the Seognam Art Center in South Korea, he has been able to exercise the full scope of his vision, with massive works of suspended stone, works of scale rendered in feather-light leaves, and the unique works in formed nails.

Often minimalistic, Lee's typically monumental work centers around circular motifs, a re-envisioning of materials, and organic shapes, duly highlighted in the exhibited *SLANTED BENCH*. With varied logs crosscut and planned to expose oval patterns, which emerge as elongated mirror images reminiscent of dividing cells, viewers are asked to look into the work, beyond the physical surface, to discover that pattern can also serve as a structure. -- (Emily Zilber, *CRAFTED: Objects in Flux*, catalog, Museum of Fine Arts, Boston, MA, August – January 2016)

As noted by art critic Taeman Choi, "Nature seems chaotic and violent depending on how it is viewed, but Lee finds the source of autogeny in a sphere. A circle is a figure closely and symbolically related to co-existence, integrity and the found of all beings. When this circle is materialized into a body, it becomes a sphere. Therefore, the symbolic representation that a grain of all livings originating from this basic rounded body is the starting point of spheres which continue to appear in his works."

CYNTHIA-REEVES



JaeHyo Lee, *0121-1110=1103335*, 2010, stainless steel, bolts, nails and wood, 13 x 83 x 20 in; (32 x 210 x 52 cm)

JAEHYO LEE

BORN

1965 Hapchen, Korea (lives and works in Seoul, Korea)

EDUCATION

1992 BFA, Hong-ik University, Seoul, Korea

SELECT SOLO EXHIBITIONS

- 2016 CYNTHIA-REEVES, MASS MoCA Campus, North Adams, MA
Seongnam Arts Center, Seoul, Korea
- 2015 M Art Center, Shanghai
Shoyang Gallery, Busan, South Korea
- 2014 PYO Gallery, Seoul, Korea
Albemarle Gallery, London UK
Gegjoo Literature House, Korea
BUNDO Gallery, Korea
M Art Center, Shanghai
HADA Gallery, London UK
- 2013 Ever Harvest Art Gallery, Taiwan
- 2012 Madison Gallery, La Jolla CA
Albemarle Gallery, London, UK
Parkryesook Gallery, Korea
DOSI Gallery, Korea
HADA Gallery, London UK
Sungkok Museum, Korea
CYNTHIA-REEVES, ABC Stone, Brooklyn, New York
- 2011 Albemarle Gallery, London
Galeria Ethra, Mexico
Galerie Noordeinde, Netherlands
Montgomery Museum of Fine Arts, Alabama
- 2010 Yoon Gallery, Seoul
Albemarle Gallery, London
Nampo Art Museum, Korea
Kwai Fung Hin Gallery, Hong Kong
CYNTHIA-REEVES, New York, NY
- 2009 Gallery Sol Beach, Korea
Ever Harvest Art Gallery, Taiwan
Gallery Keumsan, Japan
Albemarle Gallery, London
Manas Art Center, Korea
- 2008 Bundo Gallery, Korea
Dosi Gallery, Korea
Cynthia-Reeves Contemporary, New York
- 2007 Gallery Keumsan, Japan
Gallery Artside, China
Gallery Keumsan, Korea
- 2006 Gallery Marin, Korea
- 2005 Gallery Artside, Korea
- 2003 Gallery Won, Korea

CYNTHIA-REEVES

SELECT SOLO EXHIBITIONS (continued)

- 2001 Vermont Studio Center, USA
- 2000 Ilmin Museum of Art, Korea
- 1996 Museum of Seoul Arts Center, Korea

SELECT GROUP EXHIBITIONS

- 2016 JaeHyo Lee and JongRye Cha, CYNTHIA-REEVES, Walpole, NH
Lee Jaesam Exhibition, Inje Museum, South Korea
CRAFTED: Objects in Flux, Museum of Fine Arts, Boston, Boston, MA
- 2015 Art Miami, CYNTHIA-REEVES, Miami, FL
Seattle Art Fair, CYNTHIA-REEVES, Seattle, WA
LOTUS, (Public Art Installation), INFLUX 2015, The Avenue Concept, CYNTHIA-REEVES, Providence, RI
KIAF 2015, COEX
RE: Kontemporary-Fermented Souls, Waterfall Mansion, N.Y
- 2014 International Fire Sculpture Festival in Jeongseon Samtan Art Mine, Korea
LOTUS, (Public Art Installation), CYNTHIA-REEVES, Seasons of Sculpture, Sarasota, FL
Sori Arts Center of Jeollabuk-do
Cyan Museum, Korea
Samtan Art Mine, Korea
- 2013 LOTUS, (Public Art Installation), CYNTHIA-REEVES, Union Square Park, New York, NY
Opera Gallery, Dubai
Chung Mun Kyu Museum
KIAF 2013, COEX
Dubai Art-fair, Dubai
Homage a Whanki, Whanki Museum
Seek & Desire, Gyeongnam Art Museum
Contemporary Art in the Textbook, Aram Museum
Art Toronto, CYNTHIA-REEVES, Toronto, ON, Canada
- 2012 KIAF 2012, COEX
Korean Eye, Saatchi Gallery, London UK
Aqueous, Albemarle Gallery, London UK
Contemporary Korean Art Since the 1990's, Korea
China International Gallery Exposition, Beijing
Design Days Dubai, Dubai
A Magic Moment, Basel Art Center
HADA Gallery, London UK
- 2011 International Sculpture Symposium in Icheon, Icheon
Moving Art Village, Nampo Art Museum
Hong Kong Art Fair, Hong Kong
Art Paris, Paris
TX Contemporary, CYNTHIA-REEVES, Houston, TX
SOFA New York, CYNTHIA-REEVES, New York, NY
Gotenyama Exhibition, Ippodo Gallery, Gotenyama
- 2010 Korea Tomorrow, SETEC
The Seoul Art Exhibition, Seoul Museum of Art
G20 Seoul Summit Celebration Exhibition for the Korean Fine Arts, National Assembly Library
Art Docking Spot, Woomyoung Art Museum
KIAF-VIP Lounge, COEX
Hongik Sculpture Exhibition, Triennale di Milano Incheon Museum
Taiperi Art Fair, Taipei
Shanghai Art Fair, Shanghai

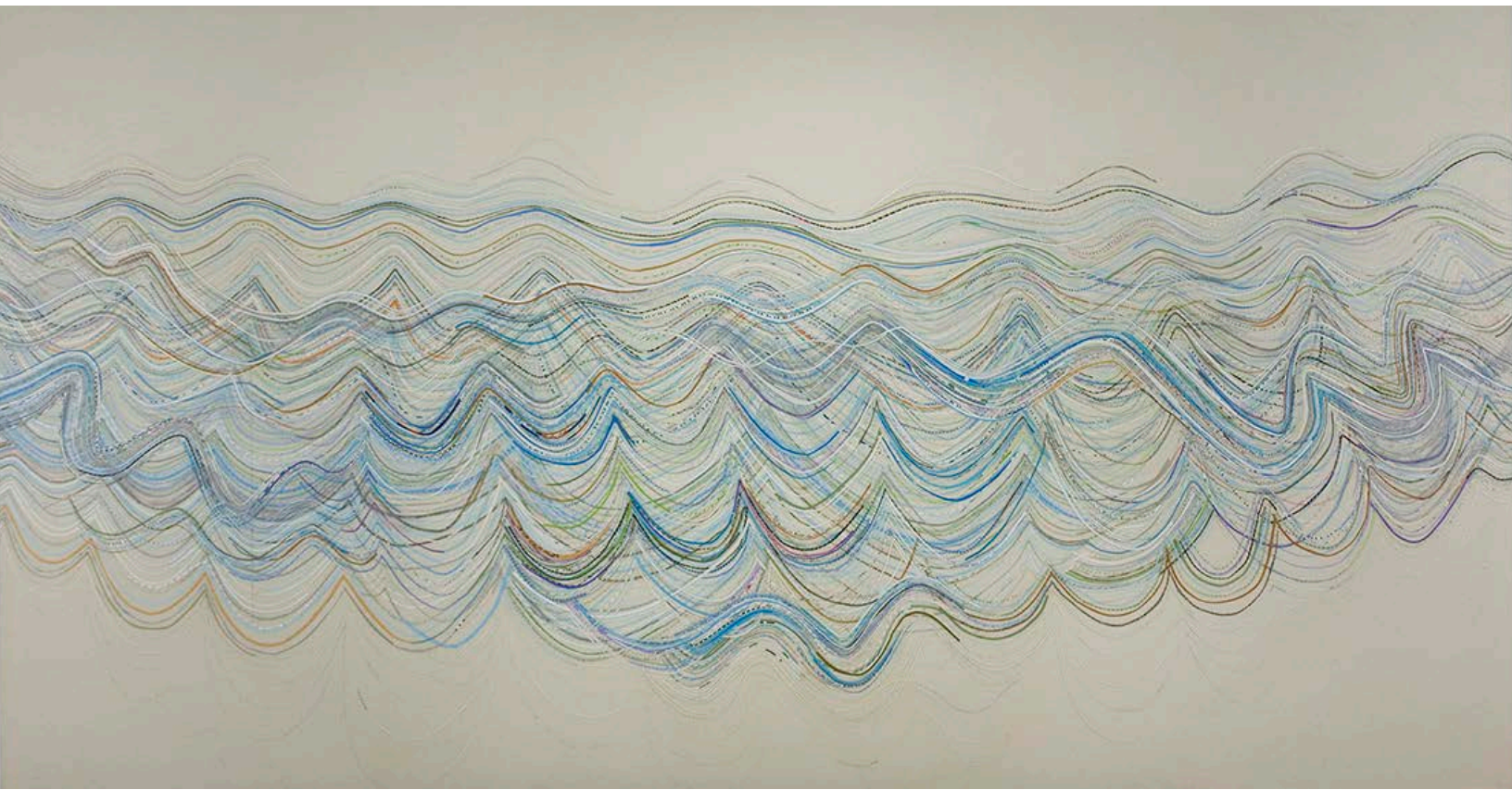
SHONA MACDONALD



Shona Macdonald's new work refers to the North Eastern Scottish landscape, a place she spent most of her childhood. The work uses found envelopes to create a canvas that is both spacious and ethereal. By referencing features such as fields or water, the work creates resonant geographies, both real and imagined. While remaining autobiographical, the project reaches to wider philosophical and emotive issues surrounding place and our sense of belonging.

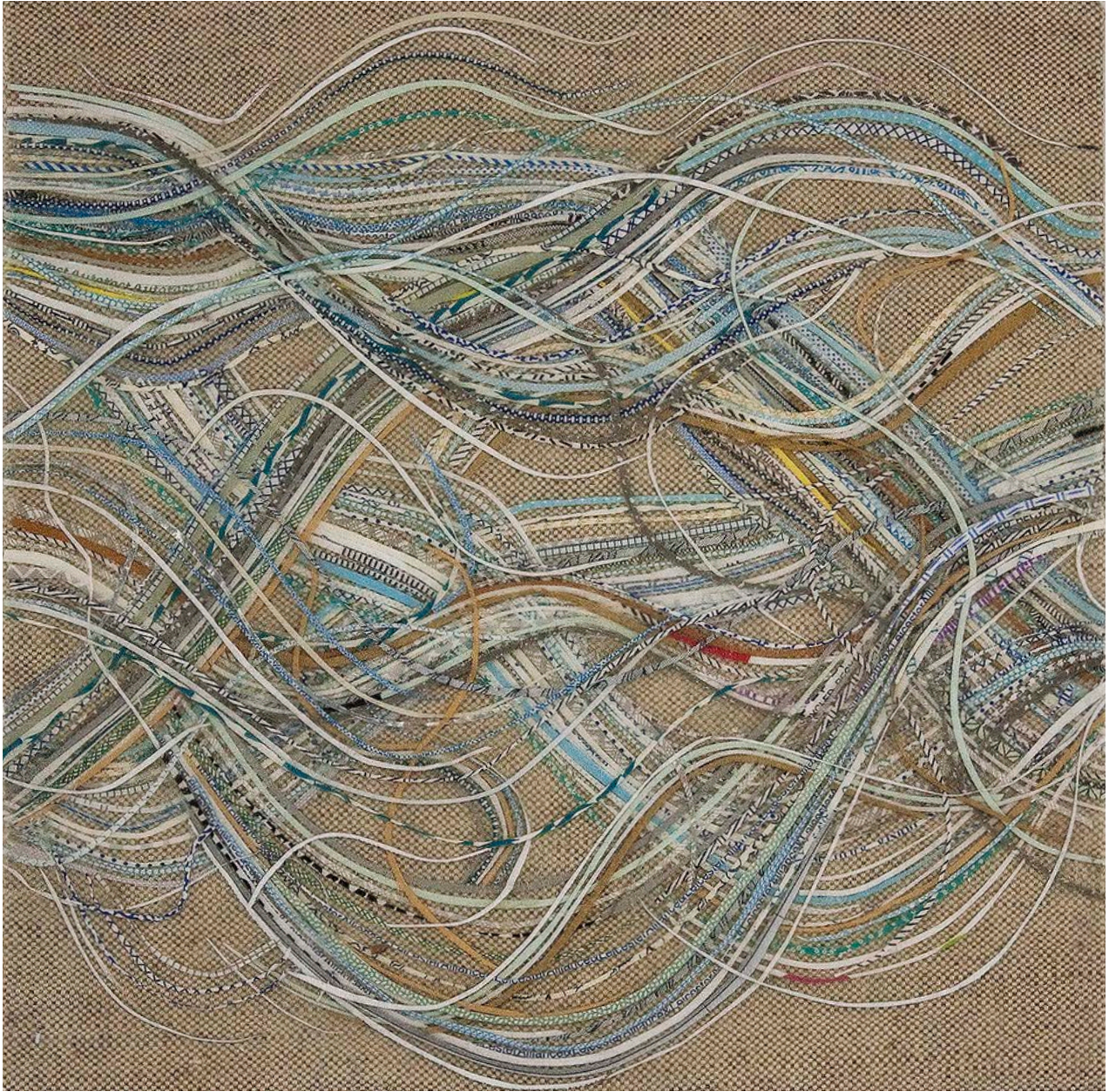
Glimpses of text and pattern disrupt the organic rhythms, while the linear shape and hue of the cut-paper strips bridge the gap between a parallel use of drawn and painted elements. The undulating happened through the process of making: when the envelopes became wet with glue, they curved and it was then relatively simple to nudge these individual curves into accumulative wave-like forms. -- Shona Macdonald

From what at first appeared to the artist as a meaningless task of collecting envelopes, has turned into a new application in which Macdonald uses the envelopes to cut and apply the strands of envelopes as though they were brushstrokes of paint on canvas. Macdonald notes, "I was struck by the similarity between the emerging striations of the Envelope Innards paintings and the landscape photographs pinned on my studio wall. It then became clear to me that the series was a very personal reflection upon place, location, identity and memory."



Shona Macdonald, *Waving Envelopes Innards*, 2008, envelopes, PVA, MSA varnish on canvas, 38 x 72 in; (96.5 x 182.9 cm)

CYNTHIA-REEVES



Shona Macdonald, *Wiggly Envelopes Innards*, 2009, envelopes, PVA, MSA varnish on canvas, 9 x 9 in; (22.9 x 22.9 cm)



Shona Macdonald, *Arc of Wilderness*, 2007, envelopes, PVA, MSA varnish on canvas, 13.5 x 22 in; 34.3 x 55.9 cm)

CYNTHIA-REEVES

SHONA MACDONALD

BORN

Aberdeen, Scotland

Lives and works in Western Massachusetts

EDUCATION

1996 M.F.A. Degree, Studio Art, University of Illinois at Chicago, IL

1991 B.F.A. Honours Degree, Painting, Glasgow School of Art, Scotland

TEACHING

2006-Pres Professor of Art, University of Massachusetts Amherst, (tenured 2009)

1998-06 Associate Professor of Art, Illinois State University, (tenured 2006)

SELECT SOLO EXHIBITIONS

- 2017 Sky on Ground, NYPOP Gallery, New York, NY
- 2015 Shona Macdonald: Ground Covering, Tarble Arts Center, Eastern Illinois University, Charleston, IL
Uncanny Valley, CYNTHIA-REEVES, MASS MoCA campus, North Adams, MA
- 2014 Waving Frontal System: Shona Macdonald, Grid Space, Brooklyn, NY
- 2013 Weather in Winter, Window, Ashville, NC
- 2012 Place-to-Place, Ebersmoore, Chicago, IL
Very Large Array, Herter Gallery, University of Massachusetts, Amherst, MA
- 2011 Sea-Change, University Galleries, Illinois State University, Bloomington, IL
Shona Macdonald: Works, 2003-2006, CYNTHIA-REEVES New England, Hanover, NH
Around, Roswell Museum and Art Center, Roswell, NM
- 2010 Shona Macdonald, St. Gaudens Picture Gallery, Cornish, NH
Shona Macdonald, Engine Room, Massey University, Wellington, New Zealand
- 2009 Two Northeast, Proof Gallery, Boston, MA
Shift: Drawings, University Art Center, College of St. Benedict, St. Joseph, MN
- 2008 Shona Macdonald, Reeves Contemporary, New York, NY
- 2007 Shift, Den Contemporary, LA, CA
- 2005 Shona Macdonald: Inscape, Gahlberg Gallery, College of DuPage, Glen Ellyn, IL
Shona Macdonald :Inscape Drawings, Chicago Cultural Center, Chicago IL
Shona Macdonald: Inscape: Paintings, Skestos-Gabriele Gallery, Chicago, IL
- 2003 Terrain, Julie Baker Fine Art, Grass Valley, CA
- 2000 Shona Macdonald, Project Room, Fassbender Gallery, Chicago, IL
- 1998 Shona Macdonald, New Work, Fassbender Gallery, Chicago, IL

SELECT TWO PERSON EXHIBITIONS

- 2012 Striations and Structure, Lynden Sculpture Garden, Milwaukee, WI
- 2002 Shona Macdonald: Envelopes and Isles, Galerie refugium, Berlin, Germany
Shona Macdonald & Molly Briggs, Works on Paper, Riverside Arts Center, Riverside, IL
Shona Macdonald & LJ Douglas, University of Alberta Art Gallery, Edmonton, Alberta, Canada
Confluence, Julie Baker Gallery, Sacramento, CA, (showed with Ray Charles White)

CYNTHIA - REEVES

SELECT GROUP EXHIBITIONS

- 2017 Unearth, Painting Center, New York, NY
 A Certain Slant of Light, Riverside Arts Center, IL travelling to Normandale Community College,
 Bloomington, MN
 Roswell Museum and Art Center, Roswell, NM
- 2016 From Atmosphere to Edge, Kingston Gallery, Boston, MA
 Impending Future, Lycoming College, Williamsport, PA
 Between Two Points, Scene Metrospace Gallery, Michigan State University, East Lansing, MI
 Metalpoint and Graphite, The Barn, Walpole, NH
 Group Exhibition, The Center for Contemporary Art, Bedminster, NJ Drawing Never Dies, Redline,
 Denver, CO
 Artist as Maker, Thinker, Feeler, Cade Center for Fine Arts, Anne Arundel Community College,
 Arnold, MD
 Watering Holes, Maryland Federation of Art, Anapolis, MD (online) Reflections, Linus Gallery,
 Pasadena, CA (online)
 NEXT up, NEXT Gallery, Denver, CO
 Painting and Seeing, University of North Carolina, Wilmington, NC Where we are Going, Where we
 have Been, MINT, Atlanta, GA 53rd Annual, Masur Museum of Art, Monroeville, LA
- 2015 Land Ho!, Fitchburg Art Museum, Fitchburg, MA, curated by Mary M. Tinti, Associate Curator, and
 Emily M. Mazzola, Koch Curatorial Fellow (catalog)
- 2014 The Lure of the Sea, Phoenix Gallery, Brighton, England, UK
- 2013 Second Nature, Rosemary Duffy Larson Gallery, Broward College, Davie, FL
 System Preferences, SCA Contemporary, Albuquerque, NM
- 2012 TX Contemporary, CYNTHIA-REEVES, Houston, TX
- 2011 Perceptions of Promise, Glenbow Art Museum, Calgary, AB, Canada, (catalog) –
 Traveling to McMaster Museum of Art, Hamilton, ON, Canada
 Place, SUNY Dutchess, Kingston, NY
 West, Wester, Westest, FFDC Gallery, San Francisco, CA
- 2010 Ah, Wilderness!, Ebersmoore, Chicago, IL
 Scape, Nicole Villeneuve, Chicago, IL
 Art Miami, CYNTHIA-REEVES, Miami, FL
- 2009 New Digs, Den Contemporary Art at Pacific Design Center, Los Angeles, CA
 Illinois, McLean County Arts Center, Bloomington, IL
 The Lustre of Silver, Evansville Museum & Art Gallery, Evansville, IN (catalog)
- 2008 Here, There, Everywhere, Chicago Cultural Center, Chicago, IL
 Marks on Paper, Pharmaka, Los Angeles, CA
 Benefit Exhibition, Evanston Art Center, Evanston, IL
 50th Anniversary of the Department of Studio Arts Faculty Exhibition, Herter Gallery, University of
 Massachusetts, Amherst, MA
- 2007 The Uncertainty Principle: Drawing in the Golden Age of Worry, Northern Illinois University Art
 Gallery, DeKalb, IL
 Topamnesia, Skestos-Gabriele Gallery, Chicago IL
- 2006 Paper, Skestos-Gabriele Gallery, Chicago, IL
 The Lustre of Silver: Contemporary Silverpoint Drawings, Telfair Art Museum, Savannah, GA
- 2005 Into the Woods, Thomas McCormick Gallery, Chicago IL
 Invisible Worlds, Evanston Art Centre, Evanston, IL
 Groundwork, d.e.n. contemporary, LA, CA
 Drawing Project, Stray Show, Chicago, IL
 Drawn Out, Gallery 400, Chicago, IL
 Into the Midst, Mixture Contemporary, Houston, TX

CYNTHIA - REEVES

LLOYD MARTIN



The surfaces of Lloyd Martin's paintings offer pulsating linear movement, blurring the boundaries of precision with his graphic patterning. His meticulous handling of paint and color allow the eye to focus on individual squares and rectangles while registering a larger picture plane in-the-making -- inferring a painting within the painting. As quoted in the artist's 2006 catalogue essay by Wang Pin-Hua, "with these frame-like lines, Martin creates a seemingly wider structure of multi-layered space by dividing and reconstructing the images, making the paintings extend far beyond the boundaries of the pictures".

Curator Lisa Russell writes, "Lloyd Martin's reductive abstractions speak to the essential nature of painting and form...The interplay of elements is like echoes that resonate and leave one with a feeling of suspended time. Contemplative in nature, these eloquent paintings act as meditations, eliciting both visceral and cerebral responses."

In his monumental triptych, *Large Alloy* (2013), the painting's sheer size offers viewers an immersive experience, an invitation into Martin's world. The work presents like a visual, secular meditation, encouraging viewers to quiet their minds and take in the movement of Martin's bands of color.

I've approached this triptych format a number of times over the years. Earlier, it was a way to extend or add to an image that was developing in my studio explorations. As with collage it enabled un-predictable possibilities. With this composition, the three panel format was a way to extend the horizontal rhythms scanning across the surface. I decided to use a taller center panel which added a vertical thrust and acts as a foil to the left right motion. I am also pleased with the added reading that the painting can reference northern renaissance altarpieces as well as contemporary art history's use of large scale to engage the body (viewer). --Lloyd Martin

CYNTHIA-REEVES



Lloyd Martin, *Crate*, 2012, oil on canvas, 50 x 78 in; (127 x 198.1 cm)



Lloyd Martin, *Yellow Shim Small*, 2015, oil on canvas, 40 x 48 in; (101.6 x 121.9 cm)

CYNTHIA-REEVES



Lloyd Martin, *Shim Series 19*, 2013, oil on canvas, 24 x 24 in; (61 x 61 cm)

CYNTHIA-REEVES



Lloyd Martin, *Shim Series 15*, 2013, oil on canvas, 24 x 24 in; (61 x 61 cm)

CYNTHIA-REEVES



Lloyd Martin, *Shim Series 17*, 2013, oil on canvas, 24 x 24 in; (61 x 61 cm)

CYNTHIA-REEVES



Lloyd Martin, *Shim Series 12*, 2013, oil on canvas, 24 x 24 in; (61 x 61 cm)

LLYOD MARTIN

EDUCATION

1980 BFA, Rhode Island School of Design, Providence, RI

SELECT SOLO EXHIBITIONS

2015 "Interval" Stux+Haller Gallery, New York, NY
2013 Lloyd Martin "works on Paper", Roshkowska Galleries Hudson, NY
Lloyd Martin: Strata, Stephen Haller Gallery, New York, NY
2012 Mettere, Stephen Haller Gallery, New York, NY
2011 Interstices, Stephen Haller Gallery, New York, NY
2010 Shift, Stephen Haller Gallery, New York, NY
2008 Traverse, Stephen Haller Gallery, New York, NY
2007 EM Bannister Gallery, RI College, Providence, RI
Tracts, Stephen Haller Gallery, New York, NY
Roshkowska Gallery, Windham, NY
2006 Finestrae, Stephen Haller Gallery, New York, NY (Catalogue)
2005 Spheris Gallery, Walpole, NH
Stephen Haller Gallery, New York, NY
Works on Paper, Roshkowska Gallery, Windham, NY
2004 Lloyd Martin Migrate, Lenore Gray Gallery, Providence, RI
Lloyd Martin Paintings, Spheris Gallery, Bellows Falls, VT
Roshkowska Gallery, Windham, NY
2003 Stephen Haller Gallery, New York, NY
Roshkowska Gallery, Windham, NY
2002 Stephen Haller Gallery, New York, NY
Lloyd Martin Paintings, Urban Shelter, Pawtucket, RI
Spheris Gallery, Walpole, NH
Abstract Events 2, Lenore Gray Gallery, Providence, RI
2001 Stephen Haller Gallery, New York, NY
2000 Abstract Events, Lenore Gray Gallery, Providence, RI
1998 Lenore Gray Gallery, Providence, RI
1997 Trustman Gallery, Boston, MA
1993 Hunt Cavanaugh Gallery, Providence, RI
1991 Gallery One, School One, Providence, RI
1985 AS220 Gallery, Providence, RI
1981 Community College of Rhode Island, Warwick, RI

SELECT GROUP EXHIBITIONS

2015 "Group Matrix" Stux+Haller New York, NY
2013 The Geometry of Longing
Stephen Haller Gallery, New York, NY
2012 Concurrence, Stephen Haller Gallery, New York, NY
Paper Rocks Scissors, Stephen Haller Gallery, New York, NY
2011 Connections, Stephen Haller Gallery, New York, NY
A Collections Exhibition: Montford and Bannister, Bannister Gallery, Rhode Island College, Providence, RI
Spectrum, Stephen Haller Gallery, New York, NY
Ten from Ten the Director's Cut, Grimshaw-Gudewicz Gallery, Fall River, MA
2010 Abstraction in Providence, Bannister Gallery, Providence, RI

CYNTHIA - REEVES

SELECT GROUP EXHIBITIONS (continued)

- 2010 Nexus, Stephen Haller Gallery, New York, NY
RISCA Fellowship Exhibition, Imago Gallery, Warren, RI
- 2009 Landscape as Grid (two person show), Stephen Haller Gallery, New York, NY
In Context, Stephen Haller Gallery, New York, NY
The Point of Convergence, Stephen Haller Gallery, New York, NY
Recent Acquisitions, Federal Reserve Board, Washington, DC
Continuum, Stephen Haller Gallery, New York, NY
- 2008 Confluence, Stephen Haller Gallery, New York, NY
RISCA Fellowship Exhibition, Machines With Magnets, Pawtucket, RI
Constant Aesthetic 2008, Stephen Haller Gallery, New York, NY
- 2007 Lloyd Martin: Works on Paper, Roshkowska Galleries, Windham, NY
ART20 2007, The Park Avenue Armory, New York, NY
The Grid, Reeves Contemporary, New York, NY 3
Drawing Now, Grimshaw-Gudewicz Gallery, Jackson Arts Center, Fall River, MA
The Grid, Spheris Gallery, Hanover, NH
f&c/r&r, Foley & Cox, New York, NY
Back to the Future: Contemporary American Art from the Collection, Meade Art Museum, Amherst College, Amherst, MA
- 2006 ART20, The Park Avenue Armory, New York, NY
Solstice, Stephen Haller Gallery, New York, NY
Traces of Drawing, Gallerie Pierre, Taichung Taiwan (catalogue)
Eye on Art, 54 Greenwich Avenue, Greenwich, CT
- 2005 Focal Point, Stephen Haller Gallery, New York, NY
Two person show, Lenore Gray Gallery, Providence, RI
Two person show, Spheris Gallery, Bellows Falls, VT
Costello Childs Contemporary, Scottsdale, AZ
Korean and American Contemporary Paintings, Sejong Center for Performing Arts Art Museum, Seoul Korea
- 2004 2 x 2 x 2, Grimshaw Gudewicz Art Gallery, Falls River, MA
Narrative Abstraction, Stephen Haller Gallery, New York, NY
Constant Aesthetic, Stephen Haller Gallery, New York, NY
- 2003 Narrative Abstraction, Stephen Haller Gallery, New York, NY
Off the Beaten Track: Contemporary Mindscapes, Mead Art Museum, Amherst, MA
Constant Aesthetic, Stephen Haller Gallery, New York, NY
Lloyd Martin Paintings, Roshkowska Galleries, Windham, NY
Coda, Stephen Haller Gallery, New York, NY
Lenore Gray Gallery, Providence, RI
Summer Group Exhibiton, Lenore Gray Gallery, Providence, RI
- 2002 Surface Fragments, Stephen Haller Gallery, New York, NY
The Abstract Mind, New England College, New Hampshire 4
The American River (Catalogue)
Traveling Museum Show, Curated by Carl Belz, Brattleboro Museum, VT
TW Wood Museum, Vermont College, VT
Florence Griswold Museum, Lyme, CT
Philadelphia Art Alliance, PA
- 2001 Constant Aesthetic, Stephen Haller Gallery, New York, NY
Aesthetic Boundaries, Stephen Haller Gallery, New York, NY
- 2000 Simple Truths, Stephen Haller Gallery, New York, NY
Painting, Anderson Contemporary Art, Santa Fe, NM

MABEL POBLET



Born in Cienfuegos, Cuba, Mabel Poblet is one of the most exciting young artists to emerge from Havana. Graduating from San Alejandro, where she was a student of Carlos Garaicoa and the Instituto Superior de Artes (2012), Poblet has recently become a large figure on the contemporary Cuban art scene. Her work ranges from photography, video and installations, to reinterpretation of pop and kinetic art. Technical mastery and a natural ability to overlay media and trends is at the foundation of her work. Poblet uses herself as the main protagonist of her work, musing on self-exploration and memory as subject matter for her practice framing poetic reflections within her life story.

Though introspective, her work is used as a form of communication between artist and viewer, conveying her inner world whilst attempting to identify common areas and patterns with the viewer. She provides her own self-reflection as a portal for others to reflect on themselves.

My work is based on self-referential experiences of my past life and the impacts that have these memories, which turned into works, determine my present. I allude to intimate acts as well as others that are the result of the relationships that people have with me. --Mabel Poblet

CYNTHIA-REEVES



Mabel Poblet, *Marea Alta*, de la serie Patria, 2015, digital impression, mirrors and nylon threads, dimensions variable

CYNTHIA-REEVES



Mabel Poblet, *Marea Alta*, de la serie Patria, 2015, digital impression, mirrors and nylon threads, dimensions variable

CYNTHIA-REEVES



Mabel Poblet, *Desconstrulda*, 2015, digital print on PVC with acetate flowers held with lace, 40 x 23 in; (101.6 x 58.4 cm)

CYNTHIA-REEVES



Mabel Poblet, *Desolada*, 2015, digital print on PVC with acetate flowers held with lace, edition 1 of 3, 47 x 71 in; (119.4 x 180.3cm)

CYNTHIA - REEVES

MABEL POBLET

BORN

1986 Cienfuegos, Cuba

EDUCATION

2012 Instituto Superior de Arte (ISA), Havana
2008 Arte de Conducta Workshop, Tania Bruguera, Havana
2007 Academia Nacional de Bellas Artes San Alejandro, Gold Title, Havana
Member of the Union of Writers and Artists of Cuba (UNEAC)

SELECT SOLO EXHIBITIONS

2016 POP GOES THE WORLD. Saltfineart latin contemporary + raw salt gallery. Los Angeles, USA 2016
Mabel Poblet. The Studio of Key West & Gallery on Greene. Key West. USA
2015 Madeja. Hank. During CHACO 2015. CO Galería. Santiago de Chile. Chile
Patria . Homeland. Collateral to the 12th Havana Biennial Villa Manuela Gallery. Havana, Cuba
2013 Reverso. Tomas y Valiente Art Center, CEART, Madrid
Marea Alta. Collateral to the 12th Havana Biennial Biennial. Morro-Cabaña. Havana, Cuba. 2014
Reverso. Reverse, ArtLima. Co Gallery, Chile. Lima, Perú
Desapariencia. Enlace Arte Contemporáneo Gallery, Lima
Situación Límite. Raquel Ponce Gallery, Madrid
2012 Reunificación Familiar. Collateral to the Eleventh Havana Biennial, San Carlos de La Cabaña Fortress
Hoy mi voz tiene sonido. Villa Manuela Gallery, Havana
2011 De tus ojos la sal. Nuno Sacramento Gallery, Ílhavo, Portugal
Recent Works. The Cuban Art Space, Center for Cuban Studies, New York
2010 Inventario. Ludwig Foundation, Havana
2009 Un Sueño Real. Fototeca de Cuba, Havana
2008 Mirando A dentro. The Cuban Art Space, Center for Cuban Studies, New York
2007 Ábacos. Centro Cultural Cinematográfico ICAIC Gallery, Havana
2006 Works on Paper and Sculpture. The Cuban Art Space, Center for Cuban Studies, New York
Lugar de Origen. José A. Díaz Peláez Gallery, Academia Nacional de Bellas Artes San Alejandro, Havana

SELECT GROUP EXHIBITIONS

2016 SP Arte 2016. Collage Habana-Galería-Arte LTDA. Sao Paulo. Brasil
THE MOTHER OF ALL ARTS. La madre de todas las Artes. Contemporary Art Center Wifredo Lam.
Reflejos. Reflections. Jad Perera Gallery. Sri Lanka
Reflexiones Proyecto Elemental · La Habana 2015. Galería Odalys. Madrid. España
2015 ART/XIOMAS Centro Cultural Español de Miami (CCMiami) USA
Artceleration. Art Basel Miami 2015 Macaya Gallery. Miami. USA
Premio Maretti III Edición. Marretti Prize 3rd Edition .Centro de Artes Visuales. La Habana. Cuba
Asamblea Assembly. Galería Taller Gourría. La Habana. Cuba
Palace of Fine Arts, San Francisco. USA
Proyecto FotoF.A.C. - Fábrica de Arte Cubano. . Devenir Animal, Devenir Intenso, Devenir
Imperceptible. Project Photo F.A.C- Cuban Art Factory Becoming Animal, Becoming Intense,
Becoming Imperceptible La Habana. Cuba
Puente abierto. Open bridge .Galería Evolución . Lima. Perú
Feria Chaco. Fair Chaco. Co-Galería -Seis Seis. Santiago de Chile. Chile
Feria Chaco. Fair Chaco. NGart Gallery &-Galeria Collage Habana. Santiago de Chile. Chile.

CYNTHIA - REEVES

SELECT GROUP EXHIBITIONS (continued)

- Lima Photo 2015, Lima Photo 2015, 6th edition, Centro de la Imagen, Lima, Perú
Festival Caribeño de la Imagen del Memorial ACTO, Caribbean Festival of the Image Memorial ACTO
Isla de Guadalupe, México
Estrictamente Personal. Strictly Personal. Collateral to the 12th Havana Biennial Embassy of Spain in
Cuba. Havana, Cuba
HB. Muestra de Arte Contemporáneo Cubano . HB.Exhibition of Contemporary Cuban Art Collateral to
the 12th Havana Biennial Pabexpo. Havana, Cuba
Ran Ron Run . Ran Ron Run. Collateral to the 12th Havana Biennial. Nina
MenocalProject, Luz y Oficios. Havana, Cuba
2009DERIVA2013. 2009DRIFT2013 . Collateral to the 12th Havana Biennial. Centro Cultural Félix
Varela. Havana, Cuba
Obras Maestras de los Museos de La Habana. Masterpieces of the Havana Museums, Palacio de
Fesch. Ajaccio, Córcega, France
Nadie sabe lo que puede un cuerpo. Nobody Knows what a Body can Manage, Foto Cuban Art
Factory. Havana, Cuba
- 2014 4ta Bienal del Fin del Mundo. 4th Biennial of the End of the World. Mar del Plata, Argentina
ARLENE FRANCIS GALLERY, Center for Spirit, Art and Politics, Santa Rosa
SOMArts GALLERY, San Francisco, USA
Art Basel Miami, Cheryl Hazan Gallery, New York. Miami, USA
Scoupe. Collage Habana Gallery. Miami, USA
PARTE. PHS Projects. Sao Paulo, Brasil
Feminine Voices And Poetics, Cuban Art (In English in the original), Somarts Gallery. San Francisco,
USA.
Elemental 2/4. Elementary 2/4, Odalys Gallery. Madrid, Spain.
6to Salón de Arte Contemporáneo Cubano. 6th Salon of Cuban Contemporary Art, CDAV (Center for
the Development of Visual Arts). Havana, Cuba.
CHACO, Co Gallery. Chile.
Summa Contemporary, Odalys Gallery, Matadero. Madrid, Spain.
HOUSTON Fine Art Fair, Collage Habana Gallery, Reliant Center. Houston, TX, USA.
10 Años UNEAC. 10 Years of UNEAC, Villa Manuela Gallery. Havana, Cuba.
Parc, Enlace Gallery, MAC (Contemporary Art Museum). Lima, Peru.
Lima Photo, Co Gallery Chile, The Image Center. Lima, Peru.
Rodando se Encuentran. They Meet Rolling, Collection of the Visual Arts National Council, Shanghai
Art Museum. Shanghai, China.
- 2013 Feminine Voices and Poetics in Cuban Art. Cara And Cabezas Contemporary, San Francisco, CA
HOUSTON Fine Art Fair. Reliant Center, Houston, TX (Collage Habana Gallery & Villa Manuela Gallery,
Havana)
Slik Art. Uprising Caribbean Art. Paris
ART MOSCOW, Rusia (Collage Habana Gallery, Havana)
CHACO, Chile Arte Contemporáneo (Co Gallery)
Art Fair NYC, New York (Co Gallery)
Art Fair Mexico, Mexico City (Co Gallery)
Art'OClok. Uprising Caribbean Art. Paris
Art Fair, Seattle (Co Gallery)
I Bienal de Sur. Figali Convención Center, Panama
After de Void. Ministry of Nomads, Edison House, London
Cuba contemporánea. Art de la Grande ile des Caraïbes. Centre Culturel Manoir de Cologny, Geneva
Robando espíritus. Fototeca de Cuba, HavanaARCO, Madrid (Raquel Ponce Gallery)
- 2012 artBO, Bogota(Villa Manuela Gallery, Havana)

GEORGE SHERWOOD



George Sherwood explores aesthetic systems of space, time, and the dynamic relationships of objects in motion. The choreography of each piece is governed by a set of basic movements, facilitated by an arrangement of aerodynamic surfaces connected by rotational points. His work often incorporates stainless steel, which has reflective qualities that integrate the sculpture into its environment. Elements such as wind, speed, direction, light, time of day, precipitation, and seasonal color transform the sculpture.

Each sculpture is a three-dimensional painting of shifting light, drawing all the colors of the environment, pulling down the sky, drawing up the earth and gathering everything in between. Quietly, gently stirring the light, each is alive: no beginning and no end. --George Sherwood

CYNTHIA-REEVES



George Sherwood, *Watercolors*, 2016, stainless steel, dichroic film, 60 x 60 x 4 in; (152.4 x 152.4 x 10.16 cm)

CYNTHIA-REEVES



George Sherwood, *Watercolors*, 2016, stainless steel, dichroic film, 60 x 60 x 4 in; (152.4 x 152.4 x 10.16 cm)

CYNTHIA-REEVES

GEORGE SHERWOOD

EDUCATION

- 1984 B.S. Engineering University of Vermont, Burlington, VT
1976 B.F.A. Hartford Art School, University of Hartford, West Hartford, CT

SELECT SOLO AND GROUP EXHIBITIONS

- 2015 Art Miami, CYNTHIA-REEVES, Miami, FL
Tacks & Jibes, CYNTHIA-REEVES, MASS MoCA campus, N. Adams, MA
Sculpture in the Garden, San Diego Botanic Garden, San Diego, CA
- 2014 Waves and Particles, An Installation of Kinetic Sculpture, CYNTHIA-REEVES Projects, Hudson River Park, New York
- 2013 Sculpture for the Home & Gardens, June LaCombe Sculpture, Pownal, ME
Pulse NY, CYNTHIA-REEVES, New York, NY
Connectivity, A curated exhibition by CYNTHIA-REEVES Projects, McColl Center for Visual Art, Charlotte, NC
ART13 London, CYNTHIA-REEVES, London, UK
Art Wynwood, CYNTHIA-REEVES, Miami, FL
- 2012 Weisman Art Museum, Kinetic Dialect(ic), Minneapolis, MN
Art Miami, CYNTHIA-REEVES, Miami, FL
Machine Tears, curated by Tabatha Flores, Boston Sculptors Gallery, Boston, MA
June LaCombe Sculpture, Haw Ridge Fam, Pownal, ME
- 2011 Dartmouth Hitchcock, Lebanon, NH
"Wind Orchid", Katonah Museum, Manchester, Katonah, NY
The Fells, Newbury, NH
Up for Air, Boston Sculptors Gallery, Boston, MA
- 2010 Currier Museum of Art, Manchester, NH
Rose Kennedy Greenway, Boston, MA
Sculpture in the Streets, Albany, NY June Lacombe Sculpture, Pownal, ME
- 2009 Rose Kennedy Greenway, Boston, MA
Sculpture in the Streets, Albany, NY
Belgravia Gallery, London, UK June Lacombe Sculpture, Pownal, ME
- 2008 Coastal Maine Botanical Gardens ("Wind and Light" solo exhibit), Boothbay, ME
June Lacombe Sculpture, Hawk Ridge Farm, Pownal, ME
Atlanta Botanical Gardens, Sculpture and Motion, Atlanta, GA
Southern Vermont Art Center, Manchester, VT
Sculpturefest, Woodstock, VT
Sculpturesite Gallery, San Francisco, CA
- 2007 Coastal Maine Botanical Gardens, Boothbay, ME
Sculpture at Maine Audubon, Gilsland Farm Sanctuary, Falmouth, ME
Contemporary Sculpture at Chesterwood, Stockbridge, MA
Southern Vermont Art Center, Manchester, VT
Shelburne Farms 20th Anniversary Art Exhibition, Shelburne, VT
- 2006 June Lacombe Sculpture, Hawk Ridge Farm, Pownal, ME
The Art of Essex County, Castle Hill, Ipswich, MA
Southern Vermont Art Center, Manchester, VT
Shelburne Farms 19th Annual Art Exhibition, Shelburne, VT
- 2005 College of the Atlantic, Blum Gallery, Bar Harbor, ME
Heard House Museum, Ipswich, MA Sculpturefest, Woodstock, VT

CYNTHIA - REEVES

SELECT GROUP EXHIBITIONS (continued)

- 2005 Shelburne Farms 18th Annual Art Exhibition, Shelburne, VT
Southern Vermont Art Center, Manchester, VT
The Sculpture Path, Forest Hills Trust, Jamaica Plain, MA
- 2004 St. Gaudens National Historic Museum, Cornish, NH (solo exhibition)
The Sculpture Path, Forest Hills Trust, Jamaica Plain, MA
- 2003 Contemporary Sculpture at Chesterwood, Stockbridge, MA
Silvermine Guild Arts Center, 54th Art of the Northeast, New Canaan, CT
Martin-Harris Gallery, Jackson Hole, WY
Pequot Library, Southport, CT
The Sculpture Path, Forest Hills Trust, Jamaica Plain, MA
Convergence Art Festival, Providence, RI
- 2002 The Sculpture Path, Forest Hills Trust, Jamaica Plain, MA
Convergence Art Festival, Providence, RI
Contemporary Sculpture at Chesterwood, Stockbridge, MA
Martin-Harris Gallery, Jackson Hole, WY
Art Research Associates, Hamilton, MA
Pequot Library, Southport, CT
- 2001 The Sculpture Path, Forest Hills Trust, Jamaica Plain, MA
Convergence Art Festival, Providence, RI
Contemporary Sculpture at Chesterwood, Stockbridge, MA
Art Research Associates, Hamilton, MA
Heard House, Ipswich Historical Society, Ipswich, MA
- 2000 Convergence Art Festival, Providence, RI
Southern Vermont Art Center, Manchester, VT
Art Research Associates, Hamilton, MA
Art in the Barn, Essex County Greenbelt, Essex, MA
Castle Hill Showcase, Brown's Cottage, Ipswich, MA
Martin-Harris Gallery, Jackson Hole, WI
- 1999 Contemporary Sculpture at Chesterwood, Stockbridge, MA
Art in the Barn, Essex County Greenbelt, Essex, MA
- 1998 Art in the Barn, Essex County Greenbelt, Essex, MA
Grace Gallery, South Hamilton, MA
The Pingree School, South Hamilton, MA
- 1997 Hall Haskell House, Ipswich, MA

COMMISSIONS AND COLLECTIONS

Christian Science Plaza, Boston, MA
Sky Orchid Grove, City Creek Center, Salt Lake City, UT
Dana-Farber Cancer Institute, Boston, MA
University of Minnesota Public Art, Biomedical Discovery District
City Creek, Salt Lake City, UT
McClaren Healing Garden, McClaren Cancer Center, Clarksburg, MI
Kendal, Hanover, NH
Atlanta Botanical Gardens, Atlanta, GA
Coastal Maine Botanical Gardens, Boothbay, ME
Vermont Institute of Natural Science, Queechee, VT
The Sculpture Path, Forest Hills Trust, Jamaica Plain, MA
Prince Michel Winery, Leon, VA

LIONEL SMIT



Lionel Smit's works explore the deconstruction of the portrait exposing the inner depths and workings of persona through juxtaposing Abstract Expressionist brushwork with elegant line portraiture. A self-taught artist born in the shadows of the Apartheid, Smit's work centers heavily on identity, realized through the formation of disparate layering. His luscious, bold surfaces, upon closer inspection, expose his subject's geneology through sporadic and translucent complexions. The viewer is left to reconcile these overlapping styles and emotive gestures, symbolically referencing the new generation in his native country.

Jason Rosenfeld, Ph.D., Distinguished Chair and Professor of Art History of Marymount Manhattan College, New York, describes, "Lionel Smit's process is adaptive, inventive, and physically engaged. He paints abstract canvases and lets them sit around the studio, ideas gestating, until he is ready to project photographs of the model on them, in a mode that recalls Andy Warhol's aproach to portraiture. But Smit does not work with reproductive processes..., instead relying on his hand to transcribe form, and frequently reworking images multiple times, such that color and line merge, breaking down both."

My fascination with portraiture and the abstraction of color plays a dualistic role in my artistic expression and creation. The combination of the representation of human form, and the mercurial quality of emotions, translated by color, line and form, is what inspires the imaginative and abstract essence of the work. --Lionel Smit

CYNTHIA-REEVES



Lionel Smit, *Colossal Fragment*, 2016, bronze, edition 6, 122. x 71 in; (310 x 180 cm)

CYNTHIA-REEVES



Lionel Smit, *Colossal Fragment*, 2016, bronze, edition 6, 122 x 71 in; (310 x 180 cm)

CYNTHIA-REEVES



Lionel Smit, *Silver Ashen*, 2016, oil on linen, 79 x 87 in; (200 x 220 cm)

CYNTHIA - REEVES

LIONEL SMIT

BORN

1982 Pretoria, South Africa

EDUCATION

1999-00 Pro Arte Alphen Park, Alphen Park, South Africa

SELECT EXHIBITIONS

- 2016 Art Miami Fair, featured artist, CYNTHIA-REEVES, Miami, FL, USA
New Release, solo exhibition, Everard Read, Johannesburg, South Africa
Morphous, public installation, Union Square, New York City, USA
Cape Town Art Fair, featured artist, Everard Read, Cape Town, South Africa
Trace, solo exhibition, Rook & Raven, New York City, USA
Obscura 2, solo exhibition, Rook & Raven, London
- 2015 *Recurrence*, solo exhibition, .M Contemporary, Sydney, Australia
JHB Art Fair, featured artist, Everard Read, Johannesburg, South Africa
Close / Perspective, solo exhibition, Everard Read, Johannesburg, South Africa
Origins, solo exhibition, Rook & Raven, London
Obscura, solo exhibition, Everard Read, Cape Town, South Africa
Art Central Art Fair, featured artist, Rook & Raven Gallery, Hong Kong
Accumulation of Disorder, installation, CYNTHIA-REEVES, MASS MoCA Campus, MA, USA
- 2014 Art Taipei, The Cat Street Gallery, Taiwan
Conronym, solo exhibition, The Cat Street Gallery, Hong Kong
Morphous, solo exhibition and installation, Circa, Johannesburg, South Africa
Cumulus, solo exhibition, Rook & Raven, London
Fugitive Identity, group exhibition, CYNTHIA-REEVES, Brattleboro, VT, USA
- 2013 Art Miami Fair, featured artist, CYNTHIA-REEVES, Miami, FL, USA
IS Sculpture, solo exhibition, IsArt, Tokara, Stellenbosch, South Africa
Strarta Art Fair, Saatchi Gallery, Rook & Raven, London
Fragmented, solo exhibition, Rook & Raven, London
Accumulation, solo exhibition, Everard Read, Johannesburg, South Africa
BP Portrait Award Exhibition, Viewer's Choice Award, National Portrait Gallery, London
Wonder Works Exhibition, The Cat Street Gallery, Hong Kong
Metal Work Public sculpture, Stellenbosch, South Africa
- 2012 *Compendium*, solo exhibition, 34FineArt, Cape Town, South Africa
Accumulation of Disorder, installation, University of Stellenbosch Gallery, Stellenbosch
Strata, solo exhibition, Rook and Raven, London
Robert Bowman Gallery, India Art Fair, India
Jhb Art Fair, Everard Read, Johannesburg, South Africa
- 2011 *Surface*, solo exhibition, Artspace, Johannesburg
34FineArt, ArtMonaco '11, Monaco
- 2010 *Out of the Office*, group exhibition, Kunstmuseum Bochum, Germany
Art Miami Fair, featured artist, CYNTHIA-REEVES, Miami, FL, USA
We are not Witches, Saatchi Gallery, London
Submerge, solo exhibition, 34FineArt, Cape Town, South Africa
- 2009 *F.A.C.E.T.*, Charity Auction, Christie's, London
Relate, solo exhibition, Grande Provence, Franschhoek, South Africa

CYNTHIA - REEVES

AWARDS

- 2013 Visitor's Choice Award, BP Portrait Award, National Portrait Gallery, London
Ministerial Award from Department of Culture for Visual Art, Western Cape Government
- 2009 Merit Award, Vuleka, Sanlam Art Competition, Cape Town
- 2008 Achievement Award, Pro Arte School of Arts
- 2000 First prize in the MTN Art Colours Awards of Gauteng
- 1999-00 Best painting student Pro Arte School of Arts

SELECT ARTICLES

- ART OF AFRICA, *The Graff Magazine*, Summer 2010
- Grand Scale, *Garden and Home Magazine*, April 2010 Time Out Magazine, 2007
- Ou idees met moderne aanslag, *RAPPORT*, 2 July 2006
- A look away, *Art Magazine*, 2006
- Individuality of faces, *Pretoria News*, 15 June 2006
- Soos in 'n tweepas, *Beeld plus*, 26 November 2004
- Radically different works from striking ensemble, *Interval*, May 2002

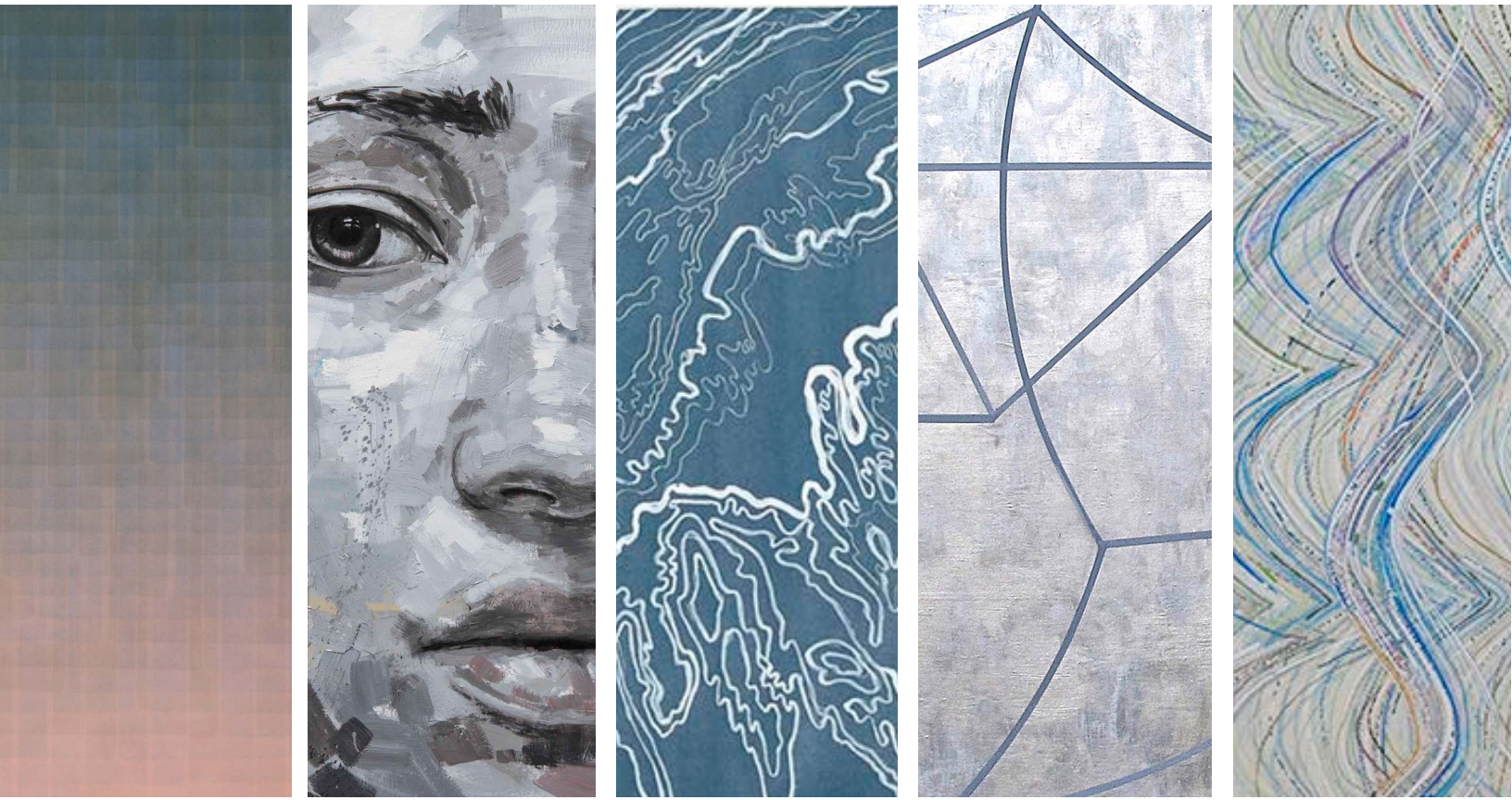
CATALOGUES:

- Cumulus LIONEL SMIT, Rook & Raven, London 2014
- Formulation LIONEL SMIT, Tokara, Stellenbosch 2013
- Accumulation LIONEL SMIT, Everard Read, Johannesburg 2013
- Strata LIONEL SMIT, Rook & Raven, London, 2012
- Surface LIONEL SMIT, Artspace, Johannesburg 2011
- We are not Witches, Saatchi Gallery, London 2011
- Submerge LIONEL SMIT, 34FineArt, October 2010
- Christie's, F.A.C.E.T (catalogue cover), October 2009
- Residue, Grande Provence Gallery, October 2009
- Group therapy, Sandton Civic Gallery, 2005
- Pretoria, Everard Read Gallery, November 2004

COLLECTIONS

- Ellerman Contemporary
- Standard Chartered Bank
- Laurence Graff
- Rand Merchant Bank
- European Investment Bank
- Johannesburg City Council
- Saronsberg Wine Estate
- Grainvest Futures
- Delaire Graff Wine Estate
- South African Embassy, Nigeria
- Parkdev
- Johann Jacobs Museum

CYNTHIA-REEVES



palm beach
MODERN + CONTEMPORARY

BOOTH PB320

Fair hours: Friday - Saturday 11 - 7, Sunday 11 - 6
Preview: Thursday, January 12, 5 - 9pm

CYNTHIA-REEVES presents work by a roster of international artists, including:

SHEN CHEN · GUDRUN MERTES-FRADY · BETH GANZ · JAEHYO LEE
SHONA MACDONALD · LLOYD MARTIN · GEORGE SHERWOOD · LIONEL SMIT · MABEL POBLET

For more information
please call 212.714.0044 or email info@cynthia-reeves.com
CYNTHIA-REEVES.COM