

# MICHAEL MULHERN & ERIC SLAYTON

---

February 4 - March 11, 2017  
The Barn at 28 Main, Walpole, NH



CYNTHIA-REEVES

cynthia-reeves.com 212.714.0044



## MICHAEL MULHERN

(1940 - 2012)

Michael Mulhern considered painting a synthesis of object and surface. His abstract works on canvas and paper often employed dense contrasts highlighted by his use of aluminum paint – a notoriously tricky medium. His pictorial vocabulary – strokes of black, white and aluminum paint applied directly to raw canvas – came straight out of Jackson Pollock. But Mr. Mulhern managed to make something personal out of these familiar elements. His loopy lines of black and white have the feeling of intimate doodles blown up to mural scale; they are simultaneously awkward and graceful, like teen-agers not quite at ease in their adult bodies.

David Yezzi of ARTnews stated, “Mulhern gets a remarkable breadth of expression and lyricism from wistfully slender means.” Another review stated about a 1993 show of Mulhern’s work, “They are pugnacious and elegant paintings that make us think about the nature of abstraction itself.”

Born and raised in Scotland, working in New York Mulhern had been pursuing abstract painting for several decades. His work has been shown consistently to critical acclaim.





Michael Mulhern, *OV2 - 45th Road*, 2002,  
oil on canvas, 78 x 80 inches





Michael Mulhern, *Sluggo 2*, 1999,  
oil on paper, 107 x 120 inches



Michael Mulhern, *Untitled 13-16*  
oil on canvas, 28 x 30 inches



Michael Mulhern, *Untitled 13-06*, 1992,  
oil on canvas, 24 x24 inches

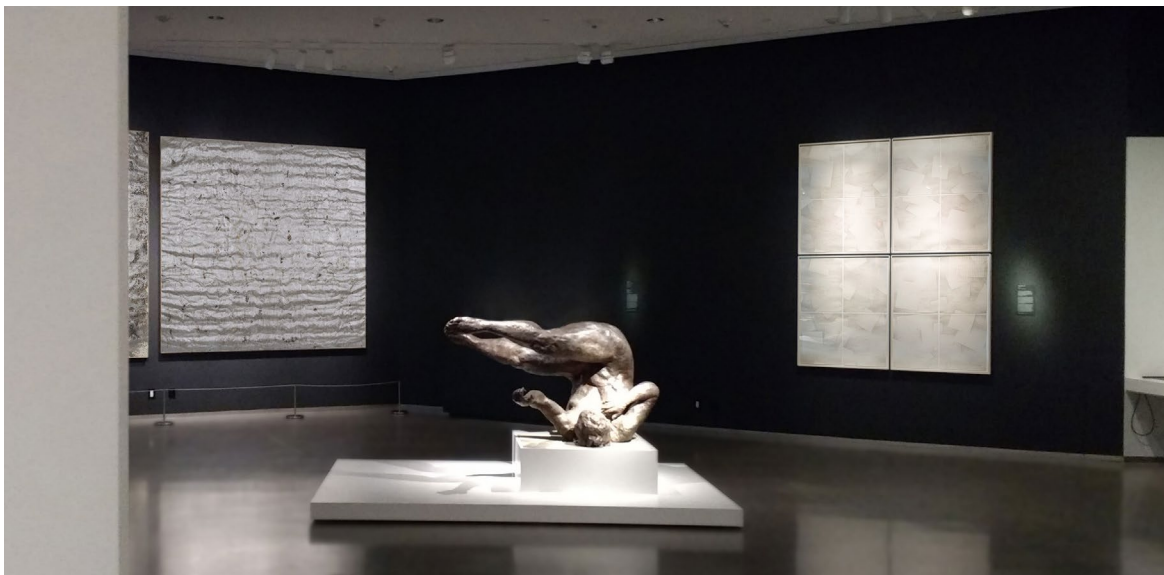




Michael Mulhern, *Untitled 13-09*, 1994,  
oil on canvas, 24 x24 inches

CYNTHIA-REEVES

## PAST EXHIBITIONS AND PROJECTS



Michael Mulhern, *Rendering the Unthinkable*,  
9/11 Memorial & Museum, New York, NY



CYNTHIA-REEVES



Michael Mulhern, *Rendering the Unthinkable*,  
9/11 Memorial & Museum, New York, NY



## MICHEAL MULHERN

### BORN

1940-12 Paisley, Scotland

### EDUCATION

1959-60 Newark School of Fine and Industrial Arts, Newark, NJ

1961-62 Brooklyn Museum Art School, Brooklyn, NY

### SELECT SOLO EXHIBITIONS

2004 CYNTHIA-REEVES, New York, NY

2001 Salander O'Reilly Galleries, New York, NY

1998 Rosenberg + Kaufman Fine Art, New York, NY

1995 Rosenberg + Kaufman Fine Art, New York, NY

1993 Stephen Rosenberg Gallery, New York, NY

1990 Stephen Rosenberg Gallery, New York, NY

1988 Stephen Rosenberg Gallery, New York, NY

1985 Exit Art, New York, NY

1981 Adam Gimbel Gallery, New York, NY

1970 Duane Street Gallery, New York, NY

### SELECT GROUP EXHIBITIONS

2016 *Rendering the Unthinkable*, 9/11 Memorial & Museum, New York, NY (permanent collection)

2015 *Michael Mulhern and Lorrie Fredette*, CYNTHIA-REEVES, MASS MoCA campus, North Adams, MA

2002 Museo de Arte Moderna, Gazoldo degli Ippoliti, Italia, Obiettivo Twin Towers

*The Abstract Mind: Painters of the Spheris Gallery*, New England College Gallery, Henniker, NH

2000 *Black and White*, CYNTHIA-REEVES, Walpole, NH

1999 *The Power of Drawing*, Westbeth Gallery, New York, NY

1998 *Selected Works*, Vail Giesler, Des Moines, IA

*No Comment*, APC Galerie, Köln, Germany

1997 *Artists of Tribeca*, Shirley Fitterman Gallery, New York, NY

*Painting*, Rosenberg + Kaufman, New York, NY

1996 *Basic Marks: Black and White Paintings*, Rosenberg + Kaufman,  
curated by Michael Mulhern, New York, NY

1993 *Presence and Absence*, ES Vandam Gallery, New York, NY

*The Inaugural Show*, The Painting Center, New York, NY

*Incidence of Passage*, Art Incentives Gallery, New York, NY

*The Tenth Summer*, Stephen Rosenberg Gallery, New York, NY

1992 *Painting*, Artspace, New York, NY

1991 *The Painted Line*, Stephen Rosenberg Gallery, New York, NY

*The Paper Trail*, Stephen Rosenberg Gallery, New York, NY

1990 *Gallery Group Exhibition*, Stephen Rosenberg Gallery, New York, NY

1989 *Poetry & Process: Nine Abstract Painters*, Pratt-Manhattan Gallery, New York, NY

*Constructing Painting*, Art in General, New York, NY

# CYNTHIA - REEVES

---

## MICHAEL MULHERN

### SELECT GROUP EXHIBITIONS (CONTINUED)

- 1988      *Selections 42*, The Drawing Center, New York, NY  
            *Abstraction: The Central Image*, Stephen Rosenberg Gallery, New York, NY
- 1987      *A Sigh of Relief*, The Wilson Art Center, Rochester, NY  
            *Individuals*, Sorkin Gallery, New York, NY
- 1986      *Black, White and Gray*, Stephen Rosenberg Gallery, New York, NY  
            *Abstraction/Abstraction*, Klein Gallery, Chicago, IL  
            *Abstraction/Abstraction*, Carnegie-Mellon University, Pittsburgh, PA  
            *Crossroads in Contemporary Art*, Soghor-Leonard Gallery, New York, NY
- 1985      *Outline*, Cutout Silhouette, Allan Frumkin Gallery, New York, NY
- 1984      Cork Gallery, New York, NY
- 1983      *Constructed Paintings*, Allan Frumkin Gallery, New York, NY
- 1982      Adam Gimbel Gallery, New York, NY
- 1981      Alan Stone Gallery, New York, NY
- 1970      Duane Street Gallery, New York, NY
- 1963      Phoenix Gallery, New York, NY
- 1962      Brata Gallery, New York, NY

### AWARDS

- 2001      Gottlieb Foundation/Painting Grant
- 2000      The Pollock-Krasner Foundation/Painting Grant
- 1989      The Pollack-Krasner Foundation/ Painting Grant
- 1987      The National Endowment for the Arts/ Painting Fellowship

### SELECT BIBLIOGRAPHY

- 2004      Wilkin, Karen, "Ash and Stone", *The Hudson Review*, March
- 1995      Wilkin, Karen, "At The Galleries", *The Partisan Review*, Winter  
            Karmel, Pepe, "Art in Review", *The New York Times*, September 22  
            MacAdam, Alfred, "Basic Marks", *Art News*, March
- 1993      Wilkin, Karen, "At The Galleries", *The Partisan Review*, Summer  
            Pinchbeck, Peter, "Presence & Absence", Exhibition Catalog Essay  
            Pinchbeck, Peter, "Incidence of Passage", Exhibition Catalog Essay
- 1987      Visco, Anthony, "The Art of Relief", Exhibition Catalog Essay
- 1986      Schwabsky, Barry, "Abstraction And Its Double Transformations  
            Within The Constructive Mode", *Arts*, September  
            Sherman, Mary, "Is Abstract Coming Back?", *Chicago Reader*, July 11  
            Carrier, David, "Abstract Art Today", Exhibition Catalog Essay  
            King, Elaine, "Abstraction/Abstraction", *Dialogue: An Arts Journal*, April
- 1985      Glueck, Grace, "Outline, Cutout, Silhouette", *The New York Times*, July 19  
            LeSuer, Claude, "An Inter-Continental Melange of Talents", *Artspeak*, March





## ERIC SLAYTON

Eric Slayton is a multi-media Brooklyn based artist whose work includes photography, video, furniture and sculpture. Inspired by the Japanese aesthetic of Wabi-Sabi, Slayton's approach to both surface and form celebrates the beauty of imperfection. Unrefined surfaces and asymmetrical forms lend integrity to his creative process. Meditation is omnipresent in Slayton's life and plays an important role in his artistic practice.

His monoliths, constructed out of concrete, lead and steel, are inspired by tall, linear shapes such as towers, pillars, tree trunks, columns and rock spires: forms that reference both industrial and natural landscapes. The rigid discipline to work with this shape gives Slayton a focal point to start from, and just as the finished pieces are conceptual "guide posts", they are also physical guides for his creativity. He approaches the medium of concrete as his canvas, shaping and treating its surface with gestural, textural strokes.

Using the tower as his chosen form, Slayton finds both power and calm in its ability to dictate location, while grounding the viewer to take pause and find respite from our everyday, often constant distractions.



Eric Slayton, *North East #1*, 2016,  
concrete, lead, gold leaf and video, 68 x 9 x 8 inches





Eric Slayton, *South East #1*, 2016,  
concrete, lead, gold leaf and video, 68 x 11 x 6 inches



Eric Slayton, *North East #1*, 2016,  
video still





Eric Slayton, *South #1*, 2016,  
concrete, lead, gold leaf and video, 68 x 11 x 6 inches



Eric Slayton, *South #1*, 2016,  
video still



PAST EXHIBITIONS AND PROJECTS



Eric Slayton and Lianghong Feng, 2016,  
CYNTHIA-REEVES on the campus of MASS MoCA, North Adams, MA

CYNTHIA-REEVES



Art Miami, 2016,  
CYNTHIA-REEVES, Miami, FL



## ERIC SLAYTON

### SELECT EXHIBITIONS

- 2016 ICF, NYC
- 2015 Berlin Collective, X Contemporary, Miami, FL  
Sara Nightingale gallery, Watermill, NY
- 2014 Wanted Design, NYC
- 2013 IFCC, NYC  
Gloria Naftali Gallery, NYC  
Galerie Joseph / Paris Design Week
- 2012 Architechural Digest Show, NYC  
A + D Museum, Los Angeles, CA
- 2011 ICF, NYC
- 2009 Dwell on Design, Los Angeles, CA

### REPRESENTATION AND SHOWROOMS

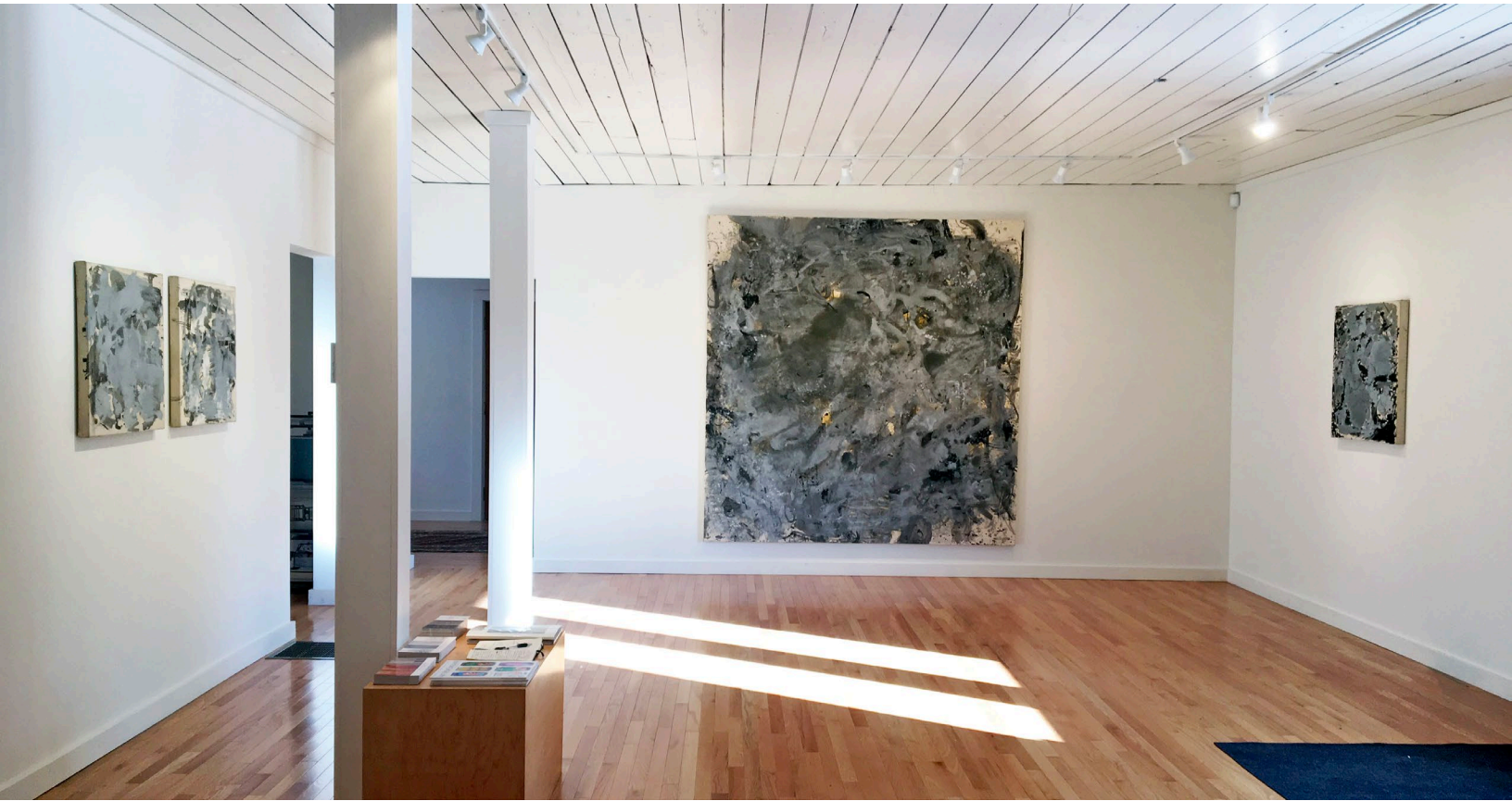
- 2016-pres Nes Creative, NYC, Los Angeles
- 2010-pres Holly Hunt, Chicago, Miami, Dallas, LA, NYC  
Room, NYC
- 2006-pres Russell Steele Interiors, Easthampton, NY
- 2012-12 Calypso Home
- 2008-10 HB Home, Westport, CT
- 2009-13 Mexcox Gardens, Southampton, NY
- 2009-12 The Cottage, Greenwich, NY
- 2009-11 Scout, Chicago, IL  
Ford & Ching, Los Angeles, CA
- 2007-12 ABC Home, NYC
- 2007-09 CJ Peters Interiors, NYC

### PUBLICATIONS

- 2016 Rum ID  
Interview Magazine  
Dwell Magazine  
Architechural Digest  
Surface Magazine  
Huffington Post  
Icon  
Wall Street Journal Magazine  
The Works Magazine
- 2015 Interiors
- 2008 Connecticut Cottages and Gardens  
Architects Newspaper  
Objekt Magazine
- 2007 Hampton Magazine

# CYNTHIA-REEVES

## EXHIBITION IMAGES



CYNTHIA-REEVES, Walpole, NH



CYNTHIA-REEVES



CYNTHIA-REEVES, Walpole, NH

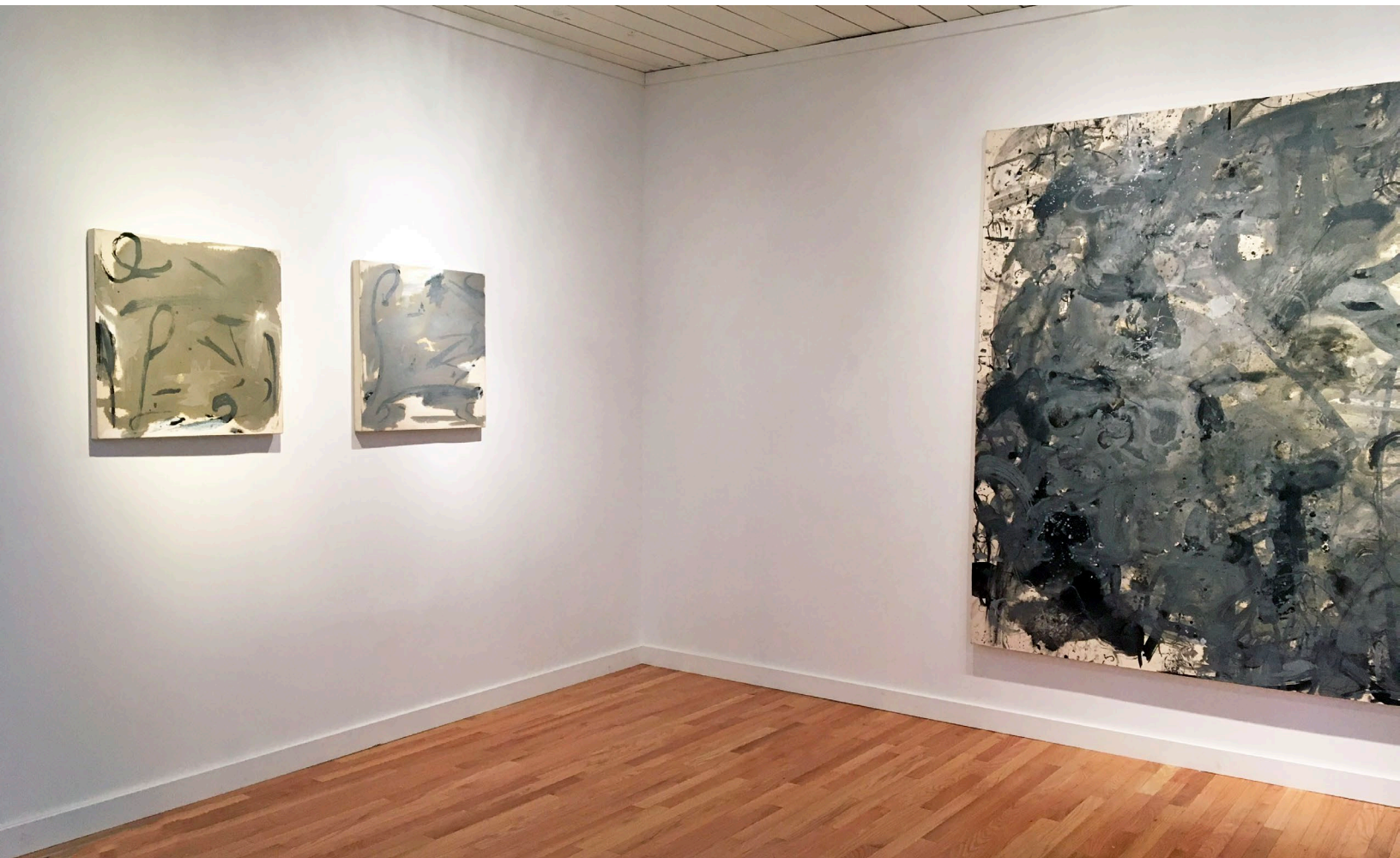
CYNTHIA-REEVES



CYNTHIA-REEVES, Walpole, NH



CYNTHIA-REEVES



CYNTHIA-REEVES, Walpole, NH

CYNTHIA-REEVES



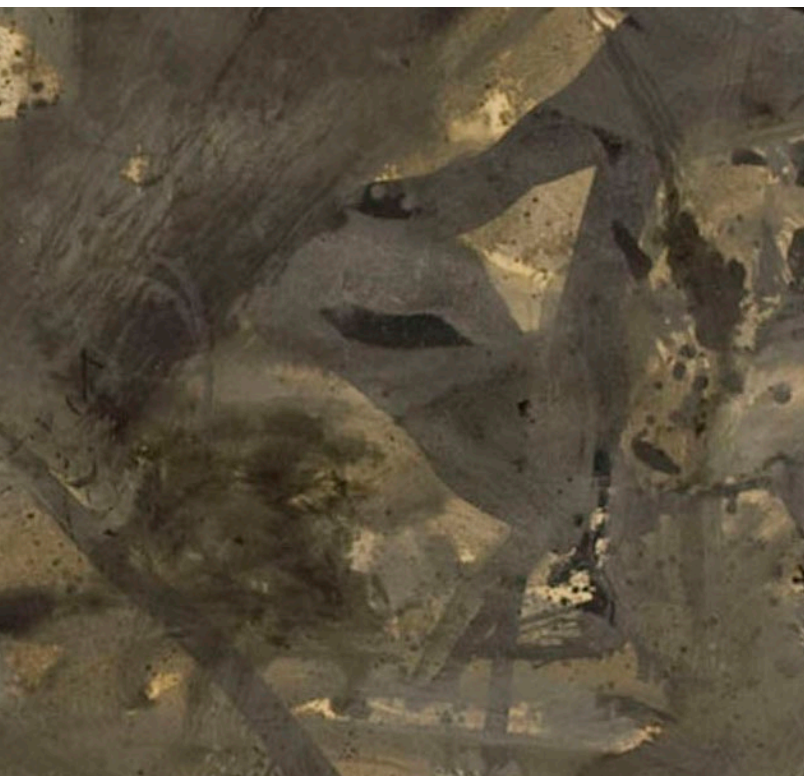
CYNTHIA-REEVES, Walpole, NH



# MICHAEL MULHERN & ERIC SLAYTON

---

February 4 - March 11, 2017  
The Barn at 28 Main, Walpole, NH



For more information  
please (call) 212.714.0044 or (email) [info@cynthia-reeves.com](mailto:info@cynthia-reeves.com)  
[cynthia-reeves.com](http://cynthia-reeves.com)