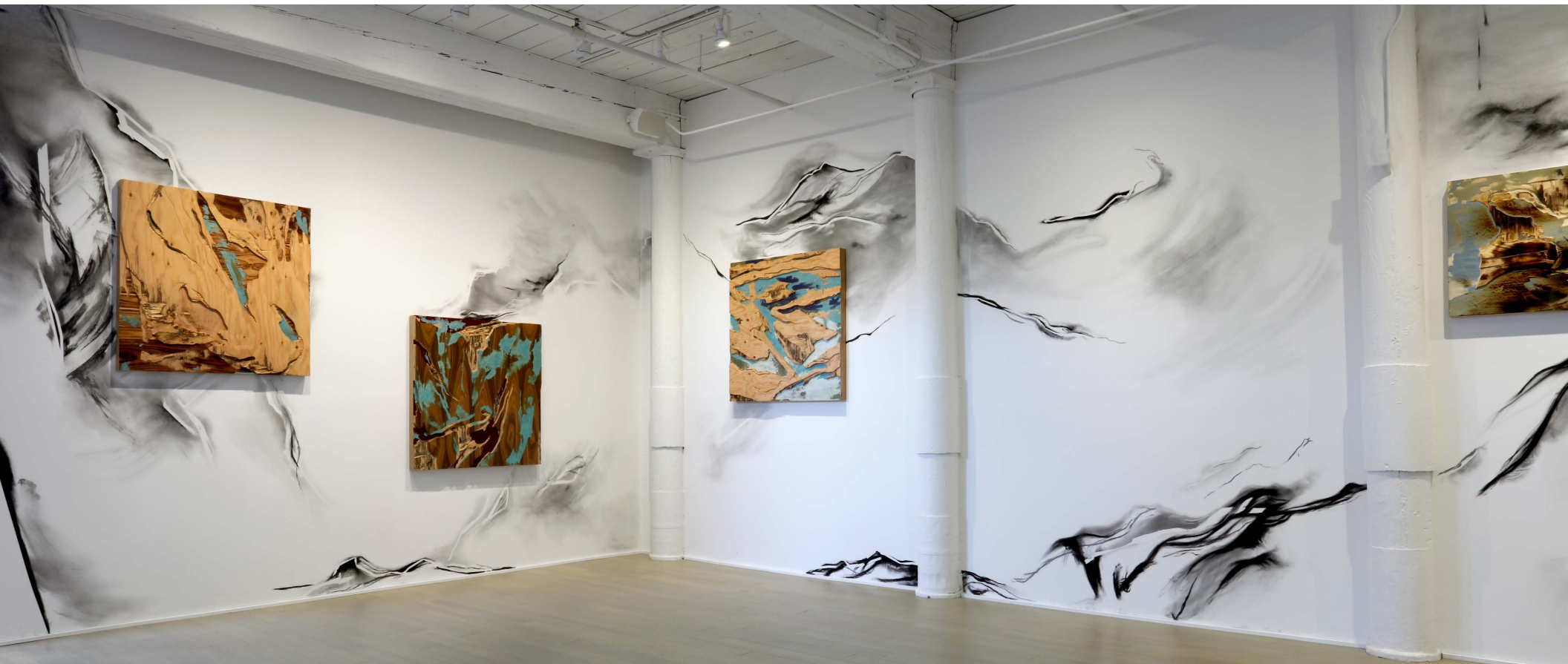


YECHEL GAGNON

PROJECT

ARTIST ON SITE: June 11 - 18



June 3 - July 8, 2017
1315 MASS MoCA Way, North Adams, MA

CYNTHIA-REEVES

cynthia-reeves.com 212.714.0044

CYNTHIA-REEVES

cynthia-reeves.com

212.714.0044



Yechel Gagnon, *Oceanic Legends*, 2017,
carved custom plywood of tinted and exotic veneer



Yechel Gagnon, *Oceanic Legends (detail)*, 2017,
carved custom plywood of tinted and exotic veneer

CYNTHIA-REEVES

cynthia-reeves.com

212.714.0044



Yechel Gagnon, *Phoenix*, 2017,
carved custom plywood of tinted and exotic veneer with gold leaf

CYNTHIA-REEVES

cynthia-reeves.com

212.714.0044



Yechel Gagnon, *Phoenix (detail)*, 2017,
carved custom plywood of tinted and exotic veneer with gold leaf



Yechel Gagnon, *D'eau de terre et de vent*, 2017,
carved custom plywood of tinted and exotic veneer

CYNTHIA-REEVES

cynthia-reeves.com

212.714.0044

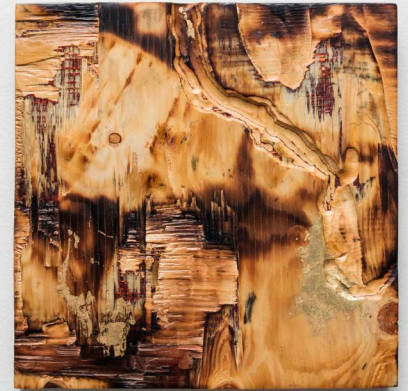
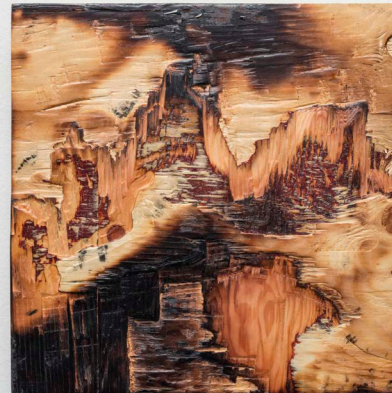
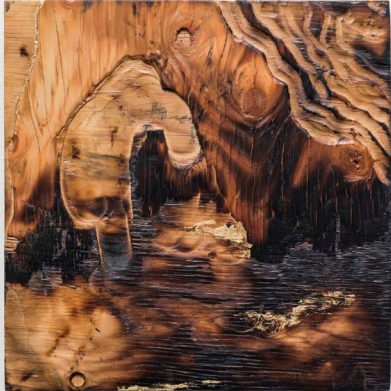


Yechel Gagnon, *Les nocturnes IV*, 2017,
carved custom plywood of burnt and exotic veneer with gold leaf

CYNTHIA-REEVES

cynthia-reeves.com

212.714.0044



Yechel Gagnon, *Les nocturnes I - IV*, 2017,
carved custom plywood of burnt and exotic veneer with gold leaf

CYNTHIA-REEVES

cynthia-reeves.com

212.714.0044



Yechel Gagnon, *Across Land & Sea I and II*, 2017,
carved custom-made plywood of tinted and exotic veneers, each 40 x 40 inches

CYNTHIA-REEVES

cynthia-reeves.com

212.714.0044



Yechel Gagnon, *River gorge I and II*, 2017,
carved custom-made plywood of tinted and exotic veneers, each 40 x 40 inches



Yechel Gagnon, *Parfum de silence*, 2015, edition 5 of 9
embossed BFK paper, 10 x 14 inches



Yechel Gagnon, *River in the Tree III (Beginning) and detail*, 2015, edition 2 of 5
embossed BFK paper, 30 x 60 inches



YECHEL GAGNON

HIGHLIGHTS

National Art Museum, China

McMaster Museum of Art

Conseil des arts de Longueuil, 4 Grants

Centre d'hébergement de Rigaud, permanent installation

Sainte-Catherine Municipal Library, permanent installation

University of Montreal, permanent installation

La Licorne Theatre, permanent installation

Close engagement with the material qualities inherent to each form and medium has served as the foundation for Yechel Gagnon's artistic practice, encompassing plywood bas-reliefs, embossed prints, frottage drawings, cast-aluminium works and large-scale architectural installations. Her approach marries diverse inspirations, including traditional Chinese painting, abstract expressionism, the generative art of Tara Donovan, the works of contemporary French artist Fabienne Verdier, and the distinguished architectural team Herzog & de Meuron. Engaging different media has allowed her to nurture a fluid, dialogical process capable of informing and renewing itself across disciplines. Gagnon's approach employs tools and techniques devised for unfolding, layering and de-layering to unearth imagery from the material at hand. The resulting pieces allude to worlds of dissonant tension and balance, composed of voids as well as signs, of emptiness aside human presence, and of the natural with the artificial.

EXHIBITION IMAGES



Yechel Gagnon, *Project*, 2017,
CYNTHIA-REEVES on the campus of MASS MoCA, North Adams, MA

CYNTHIA-REEVES

cynthia-reeves.com

212.714.0044



Yechel Gagnon, *Project*, 2017,
CYNTHIA-REEVES on the campus of MASS MoCA, North Adams, MA

CYNTHIA-REEVES

cynthia-reeves.com

212.714.0044



Yechel Gagnon, *Project*, 2017,
CYNTHIA-REEVES on the campus of MASS MoCA, North Adams, MA

CYNTHIA-REEVES

cynthia-reeves.com

212.714.0044



Yechel Gagnon, *Project*, 2017,
CYNTHIA-REEVES on the campus of MASS MoCA, North Adams, MA

PAST EXHIBITIONS AND PROJECTS



Yechel Gagnon, *Palimpsest*, 2004,
Installed at McMaster Museum of Art, Hamilton, Ontario, Canada

CYNTHIA-REEVES

cynthia-reeves.com

212.714.0044

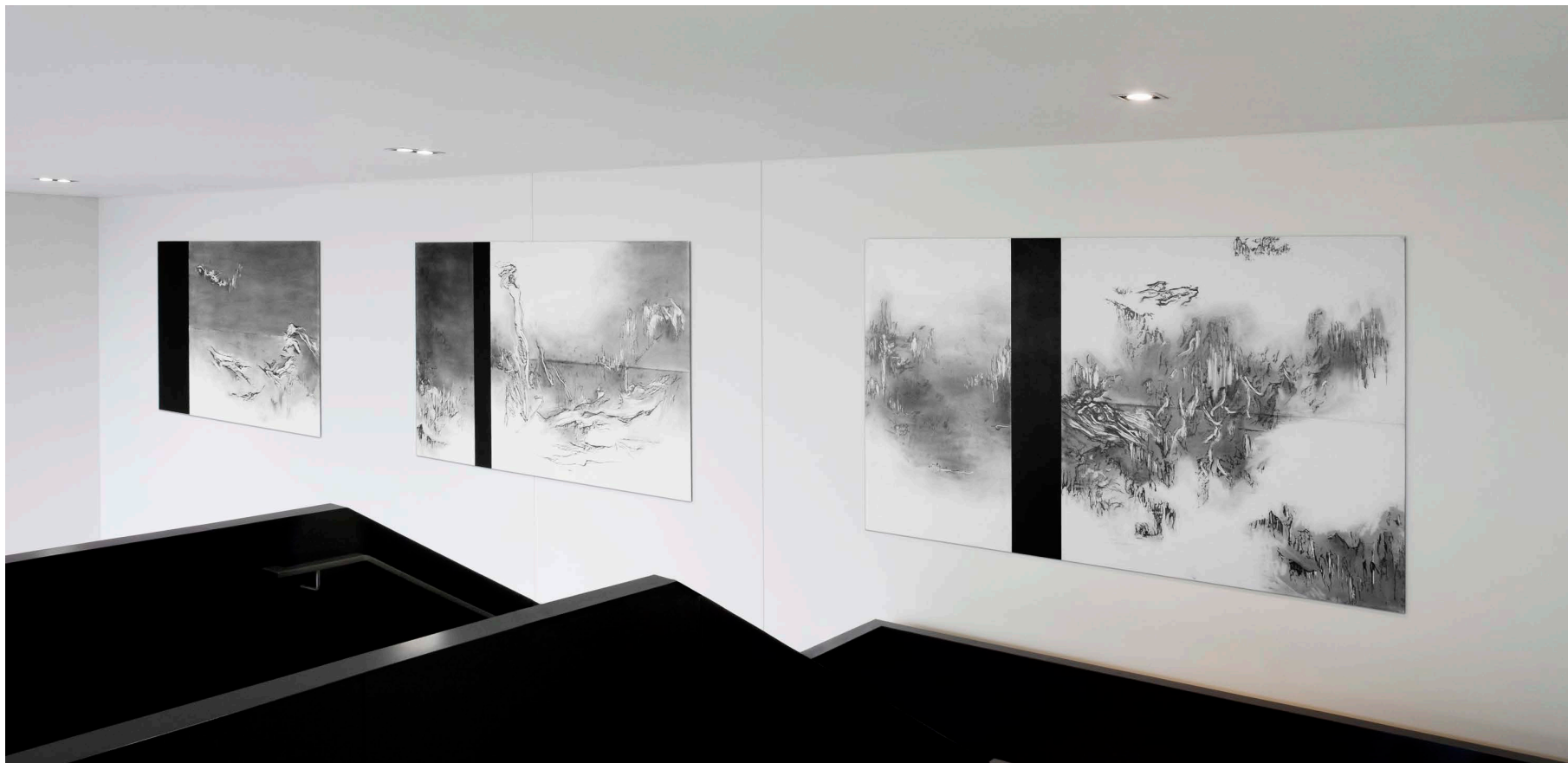


Yechel Gagnon, *Entre ciel et terre*, 2010,
carved poplar plywood, 174 x 803.5 inches
Installation at Jean-de-Brebeuf College, Montreal, Canada

CYNTHIA-REEVES

cynthia-reeves.com

212.714.0044



Yechel Gagnon, *Entre brume et nuage*, 2010,
graphite on mylar, ink on paper mounted on aluminum, 113 x 583 inches
Installation at Jean-de-Brebeuf College, Montreal, Canada

CYNTHIA-REEVES

cynthia-reeves.com

212.714.0044



Yechel Gagnon, *Tong*, 2011,
cast aluminum, 247 x 107 inches
Installation at Licorne Theatre, Montreal, Canada

YECHEL GAGNON

PROJECT

ARTIST ON SITE: June 11 - 18

June 3 - July 8, 2017
1315 MASS MoCA Way, North Adams, MA



CYNTHIA-REEVES

cynthia-reeves.com 212.714.0044