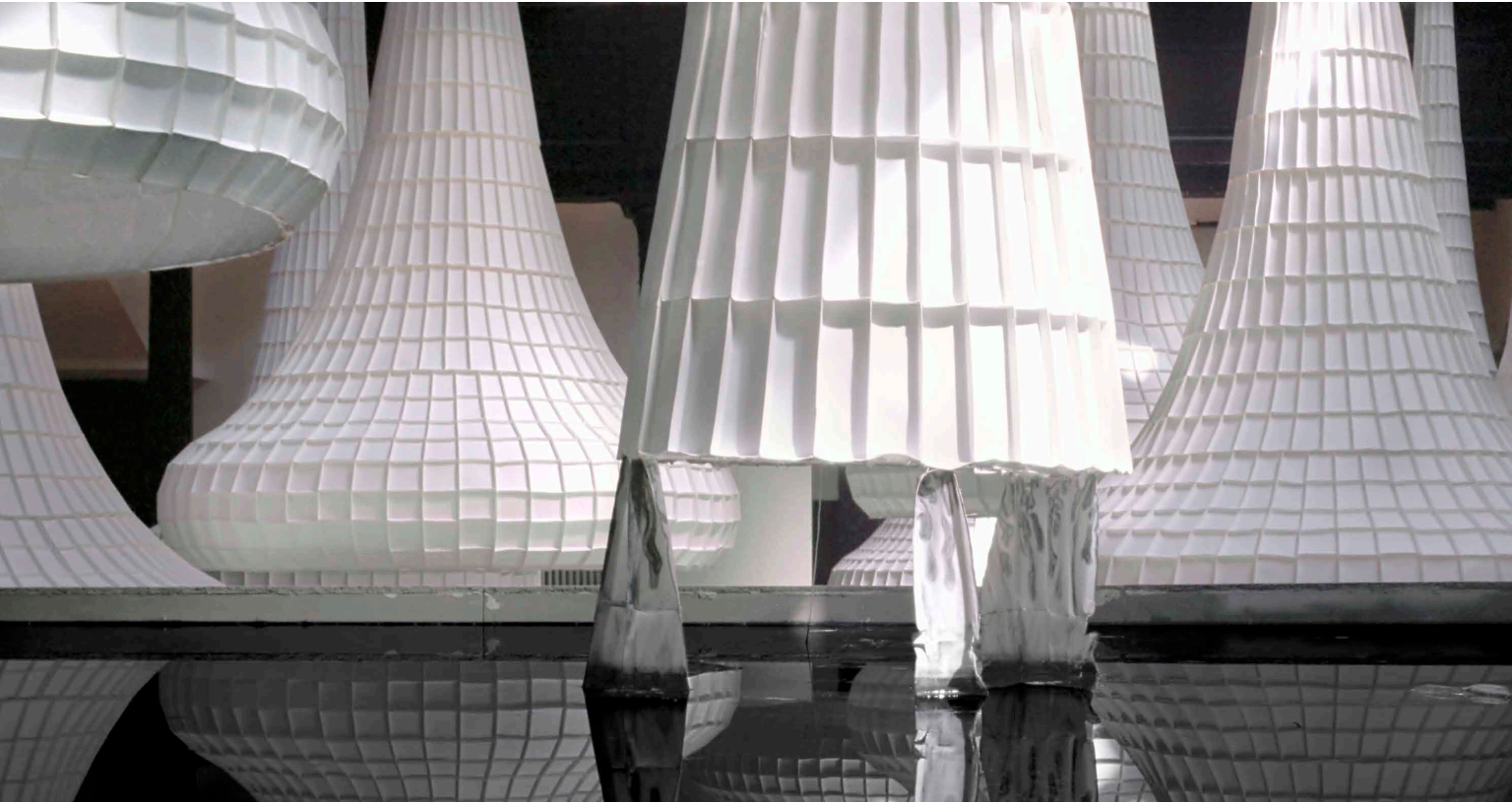


CYNTHIA-REEVES



John Grade, *Elephant Bed*, installation, Brighton, UK

WE DO ART

WE DO ART

WE SOURCE

artwork from all over the world

WE CURATE

contemporary art collections

WE DEVELOP

concepts > fabrication > installation

WE COLLABORATE

on complex projects from planning to installation

WE ENGINEER

site-based commissions

WE FOCUS

on science and the environment

WE ORGANIZE

public art exhibitions

WE COMMISSION

bespoke architectural designs

CYNTHIA-REEVES

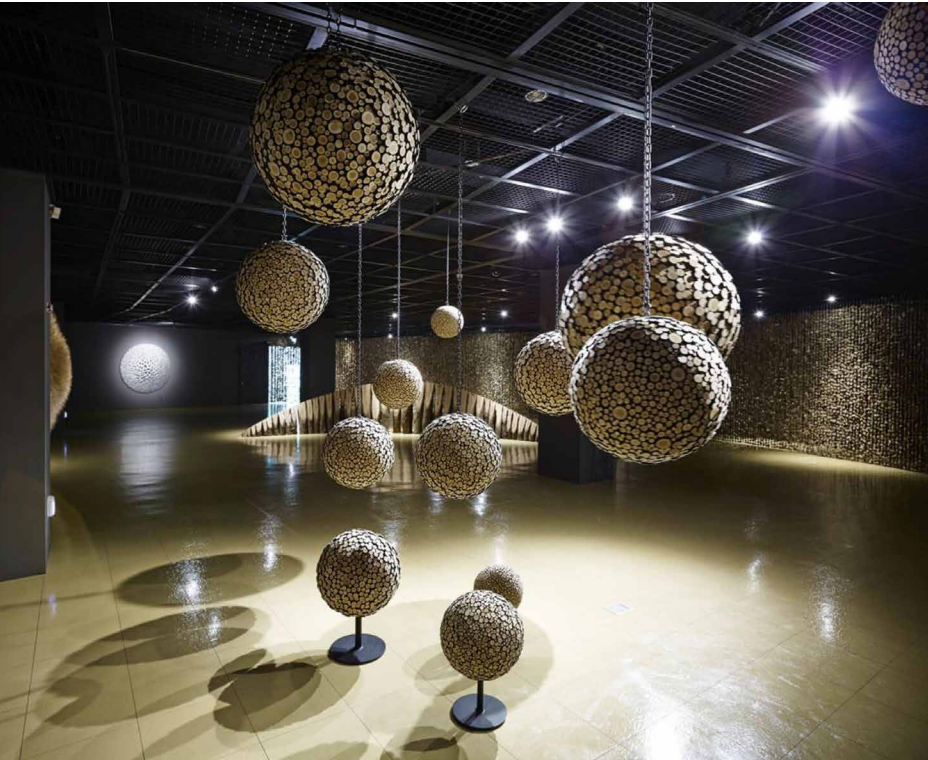
212.714.0044 cynthia-reeves.com



Janet Echelman, site-based installation, Amsterdam Light Festival, Netherlands

WE SOURCE

artwork from all over the world



JaeHyo Lee, exhibition, Seongnam Arts Center, South Korea



WE SOURCE

artwork from all over the world

CYNTHIA-REEVES

212.714.0044 cynthia-reeves.com



Sibylle Pasche, *Floating*, Carrara marble, installation at Lake Lugano, Italy

WE SOURCE

artwork from all over the world



JaeHyo Lee, site-based installation, Italy

WE SOURCE

artwork from all over the world

CYNTHIA-REEVES

212.714.0044 cynthia-reeves.com



Mabel Poblet, site-based installation, Cuba

WE COLLABORATE

concepts > fabrication > installation

CYNTHIA-REEVES

212.714.0044 cynthia-reeves.com



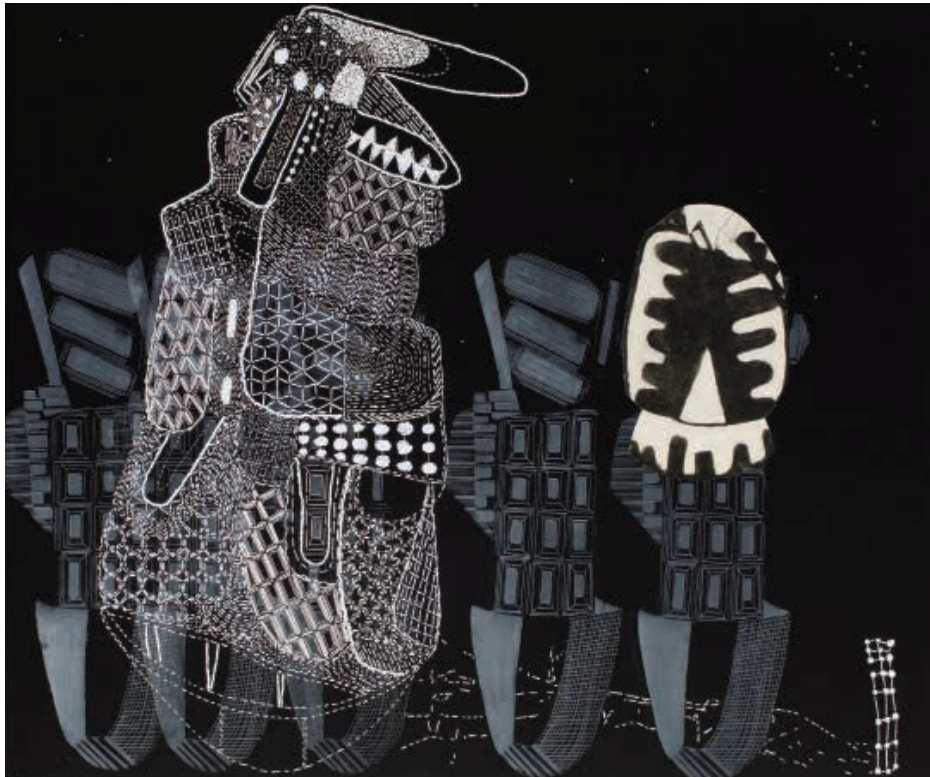
Lionel Smit, *Accumulation of Disorder*, 2013, installation view, North Adams, MA

WE SOURCE

artwork from all over the world



Sarah Amos, *Red Manja*, 2015, felt with hand stitching



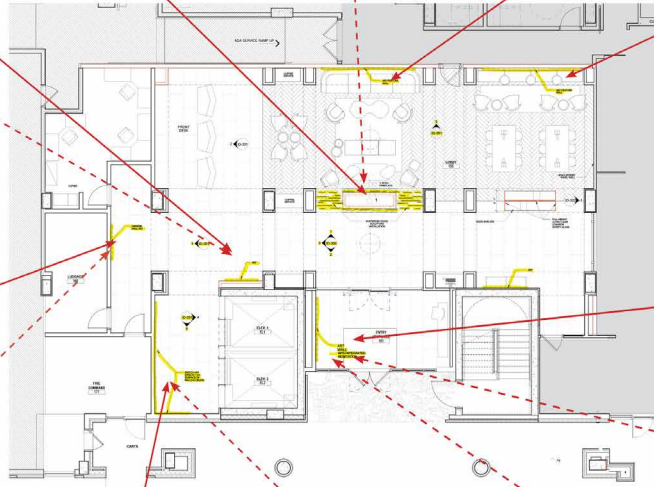
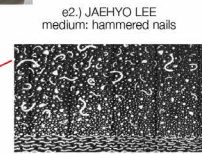
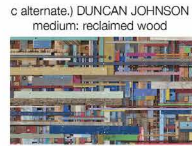
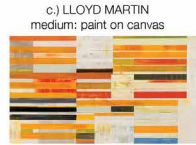
Sarah Amos, *Black Tausi*, 2015, collograph on felt with hand stitching, Australia

WE SOURCE

artwork from all over the world

CYNTHIA-REEVES

212.714.0044 cynthia-reeves.com



Client proposal

WE CURATE

contemporary art collections

CYNTHIA-REEVES

212.714.0044 cynthia-reeves.com

2a option a: SHULI SADE

3/4 a option a: SHULI SADE

2/3/4 b option b: SHULI SADE

5/6 a option a: DEBORRA STEWART-PETTENGILL

5/6 b option b: RUTHERFORD WITTHUS

1 THOMAS JACKSON

19 THOMAS JACKSON

18 THOMAS JACKSON

17a option b: ALISA DWORSKY

17b option b: ANNE LINDBERG

15/16 SARAH AMOS

14a option a: MIKE GLIER

14b option b: YIZHAK ELYASHIV

13 JAEHYO LEE

12a option a: LLOYD MARTIN

12b option b: OLIVER MARSDEN

11a option a: MARY JUDGE

11b option b: FRANCINE FUNKE

9a option a: JULIA BARELLO

9b option b: JAEHYO LEE

7 EDWARD BURTYNSKY

8 NIKE SCHROEDER

10 JONATHAN PRINCE

Client proposal

WE CURATE

contemporary art collections

CYNTHIA-REEVES

212.714.0044 cynthia-reeves.com



Jonathan Prince, *Lightbox*, Madison Ave, NYC

WE CURATE

contemporary art collections



Shen Chen, commissioned paintings, Charlotte, NC

WE CURATE

contemporary art collections

CYNTHIA-REEVES

212.714.0044 cynthia-reeves.com



Alexander Mijares, private corporate commission, spray paint on sheetrock, site specific installation, 5' high x 45' long, Miami, FL

WE CURATE

contemporary art collections

CYNTHIA-REEVES

212.714.0044 cynthia-reeves.com

WE CURATE

contemporary art collections

JaeHyo Lee, corporate commission, Charlotte, NC





Anne Lindberg, installation view, Omaha, NE

WE CURATE

contemporary art collections

CYNTHIA-REEVES

212.714.0044 cynthia-reeves.com

WE CURATE

contemporary art collections

John Grade, corporate commission, Charlotte, NC





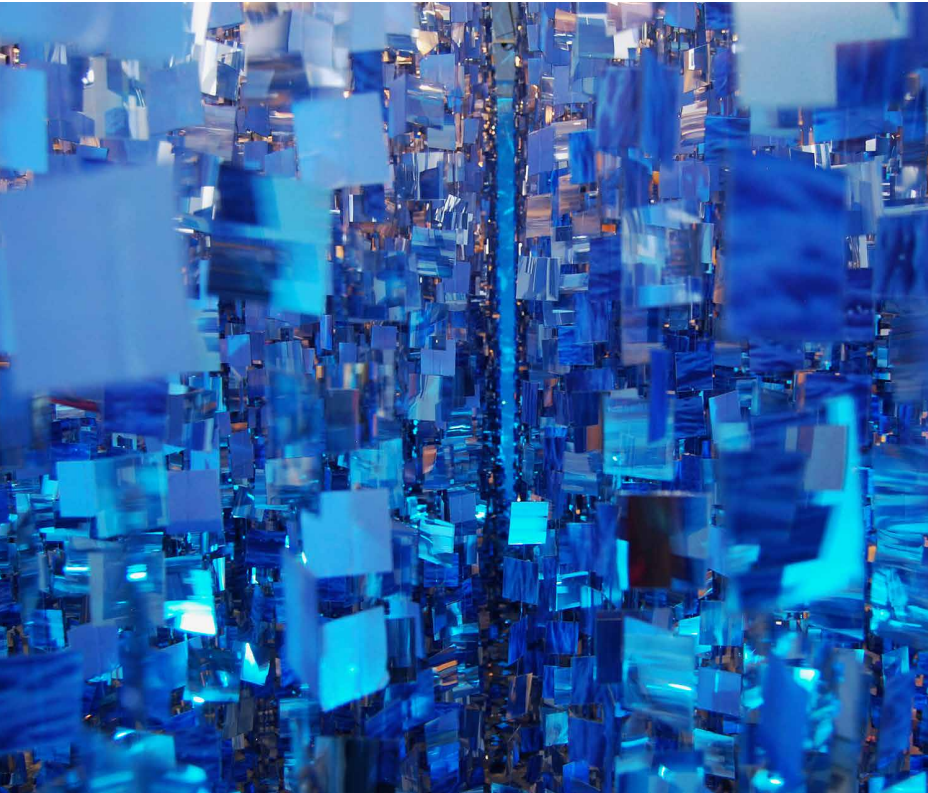
JaeHyoo Lee, *0121-1110=106102*, 2006, stone, Geneva, Switzerland

WE DEVELOP

concepts > fabrication > installation

CYNTHIA-REEVES

212.714.0044 cynthia-reeves.com



Mabel Poblet, *Marea Alta* de la serie *Patria*, Palm Beach, FL

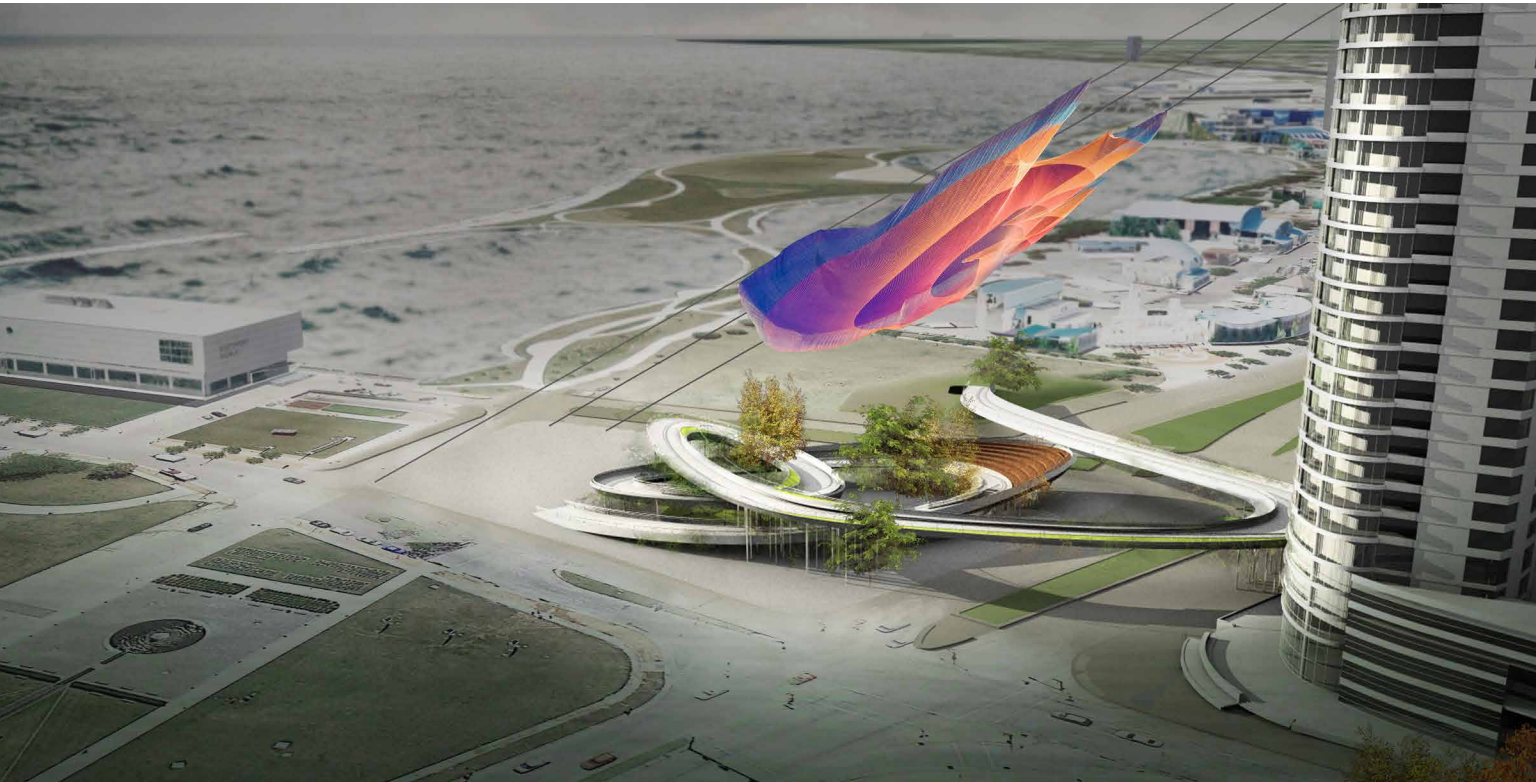


WE DEVELOP

concepts > fabrication > installation

CYNTHIA-REEVES

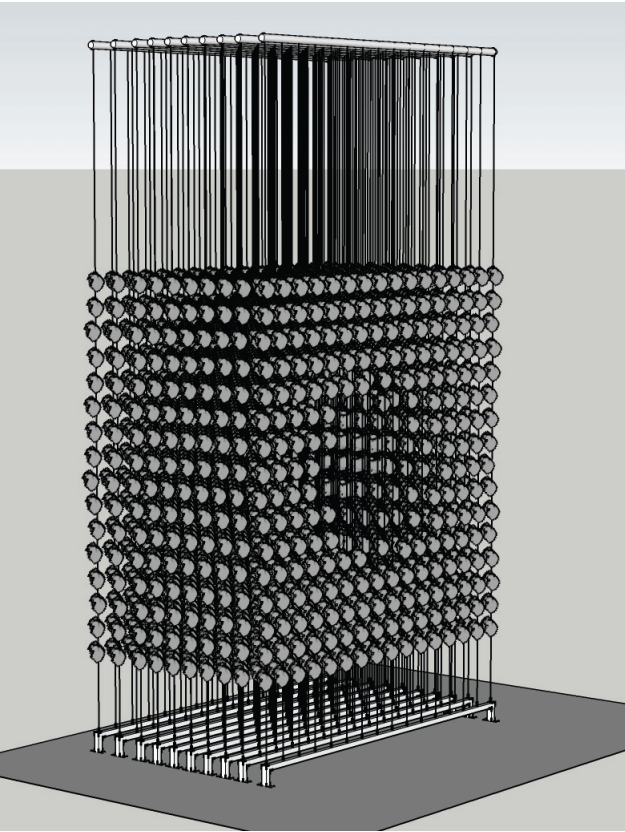
212.714.0044 cynthia-reeves.com



Janet Echelman, digital rendering, Milwaukee, WI

WE DEVELOP

concepts > fabrication > installation



JaeHyo Lee, concept rendering for site-based installation, Las Vegas, NV



WE DEVELOP

concepts > fabrication > installation



JaeHyo Lee, installation process



WE DEVELOP

concepts > fabrication > installation

CYNTHIA-REEVES

212.714.0044 cynthia-reeves.com



JaeHyoo Lee, installation process

WE COLLABORATE

concepts > fabrication > installation

CYNTHIA-REEVES

212.714.0044 cynthia-reeves.com



JaeHyo Lee, installation process, Mexico

WE COLLABORATE

concepts > fabrication > installation

CYNTHIA-REEVES

212.714.0044 cynthia-reeves.com

WE ENGINEER

site-based commissions

Jonathan Prince, Iota, concept rendering



CYNTHIA-REEVES

212.714.0044 cynthia-reeves.com

WE ENGINEER

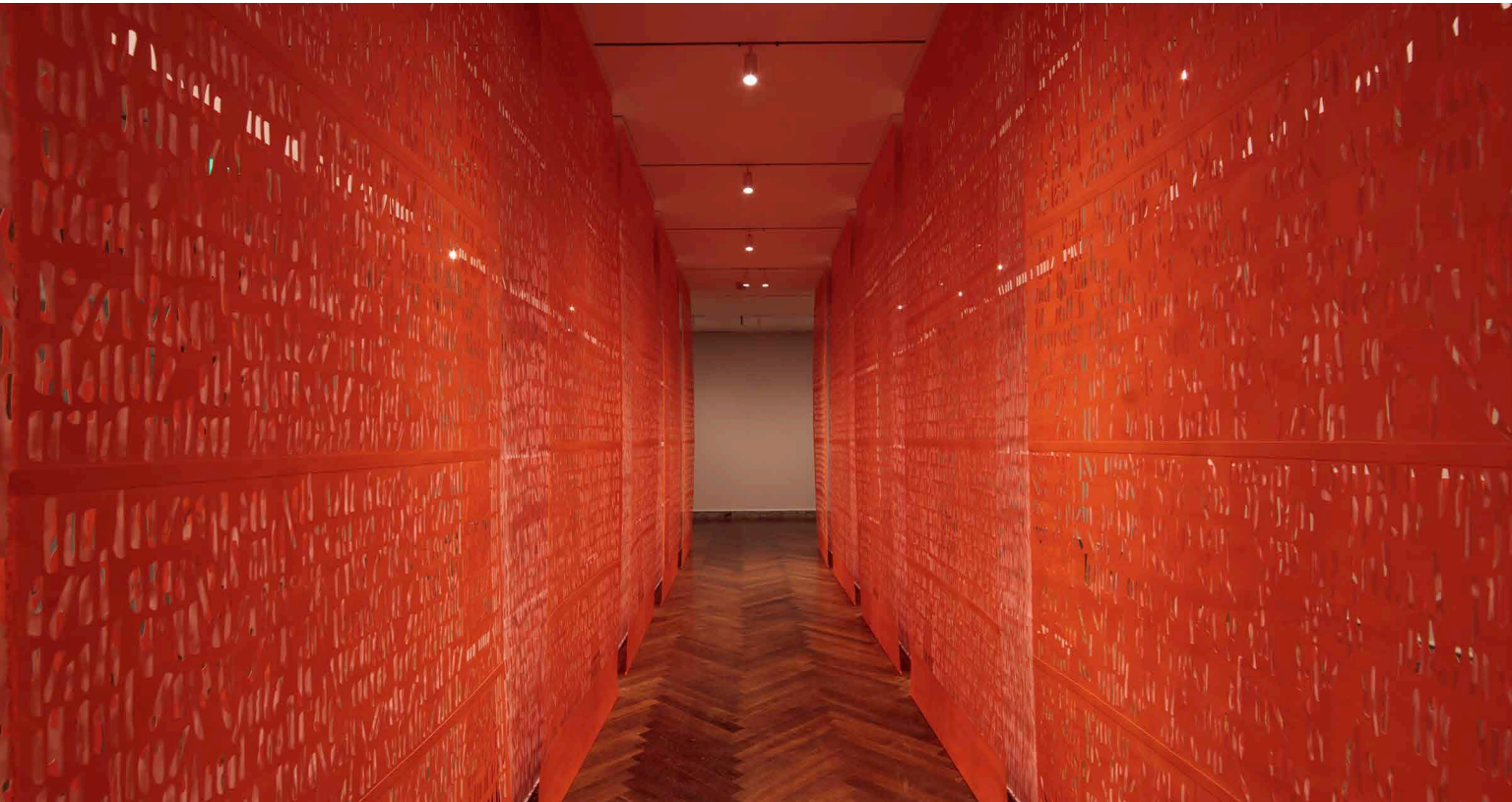
site-based commissions

John Grade, site-based installation, Austin, TX



CYNTHIA-REEVES

212.714.0044 cynthia-reeves.com



Jennifer Caine, *Words in Air*, cut paper, Addison Art Gallery, Orleans, MA

WE ENGINEER

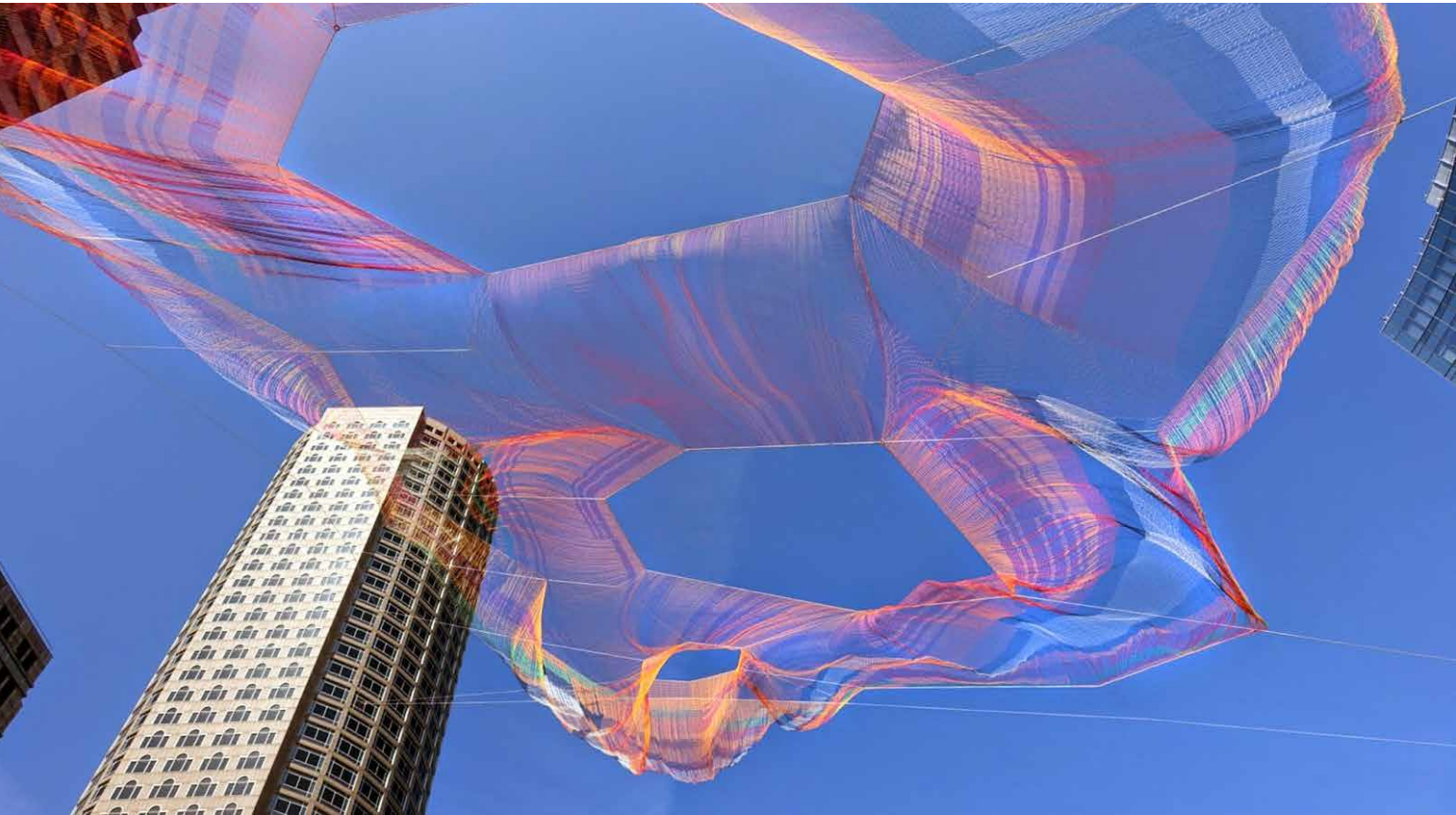
site-based commissions



Steven Siegel, site-based installation, Italy

WE FOCUS

on science and the environment



Janet Echelman, site-based installation, Rose Kennedy Greenway, Boston, MA

WE FOCUS

on science and the environment

CYNTHIA-REEVES

212.714.0044 cynthia-reeves.com



Daniel Kohn, *Dataset*, commissioned for the Broad Institute, Cambridge, MA

WE FOCUS

on science and the environment



John Grade, *Spur*, site-based installation, Sun Valley, ID

WE FOCUS

on science and the environment



Anita Glesta, Watershed Project, London

WE FOCUS

on science and the environment



Steven Siegel, *Biography*, recycled material

WE FOCUS

on science and the environment



John Grade, *Middle Fork*, detail, Renwick Gallery, Washington, DC

WE FOCUS

on science and the environment



Beth Galston, public art commission, San Antonio, TX



Beth Galston, *Luminous Gardens*, cast resin acorn caps, LED lights, wire

WE FOCUS

on science and the environment

CYNTHIA-REEVES

212.714.0044 cynthia-reeves.com

WE FOCUS

on science and the environment

Lorrie Fredette , *The Great Silence*, beeswax, tree resin, muslin, and brass



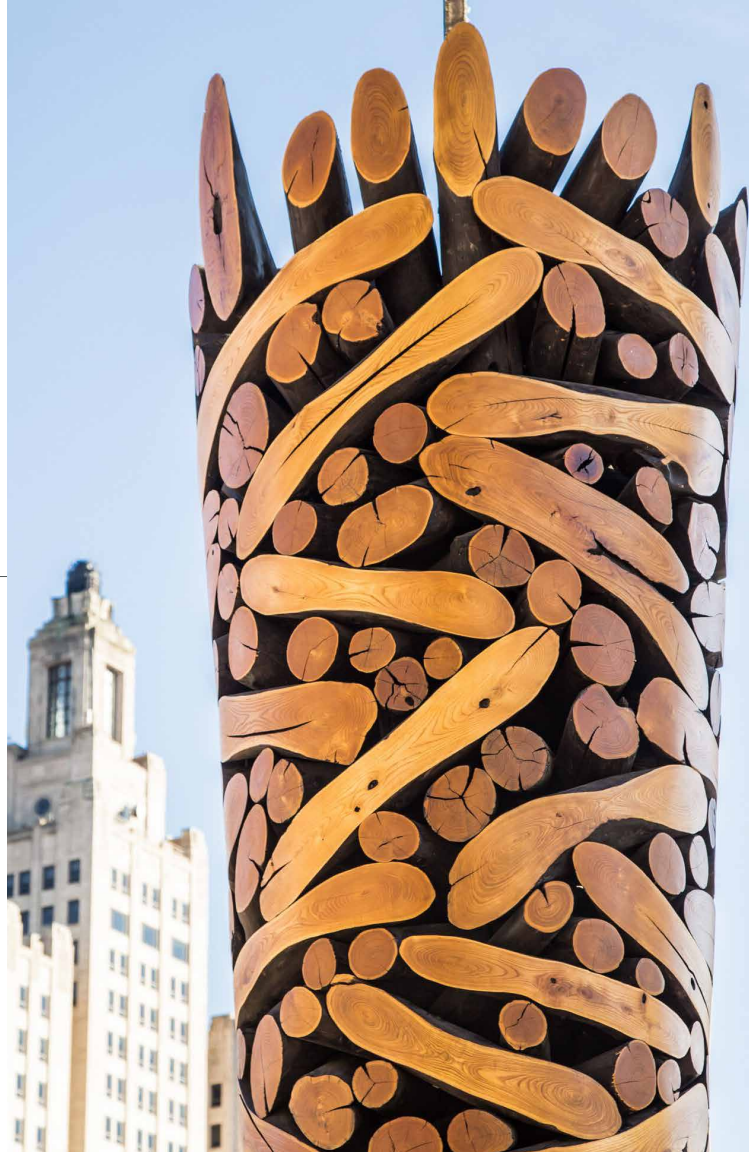
CYNTHIA-REEVES

212.714.0044 cynthia-reeves.com

WE ORGANIZE

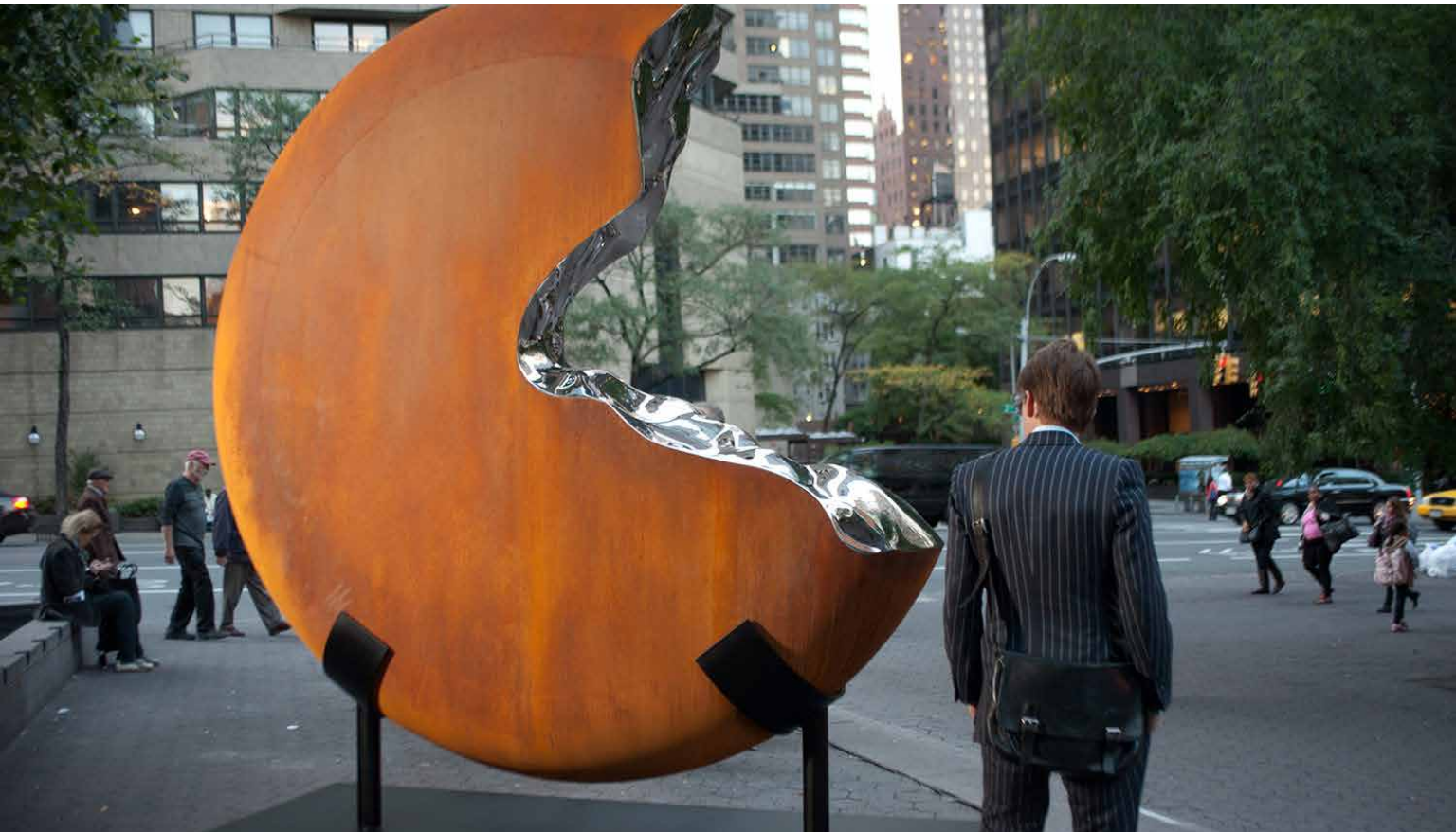
public art exhibitions

JaeHy0 Lee, *LOTUS*, Providence, RI



CYNTHIA-REEVES

212.714.0044 cynthia-reeves.com



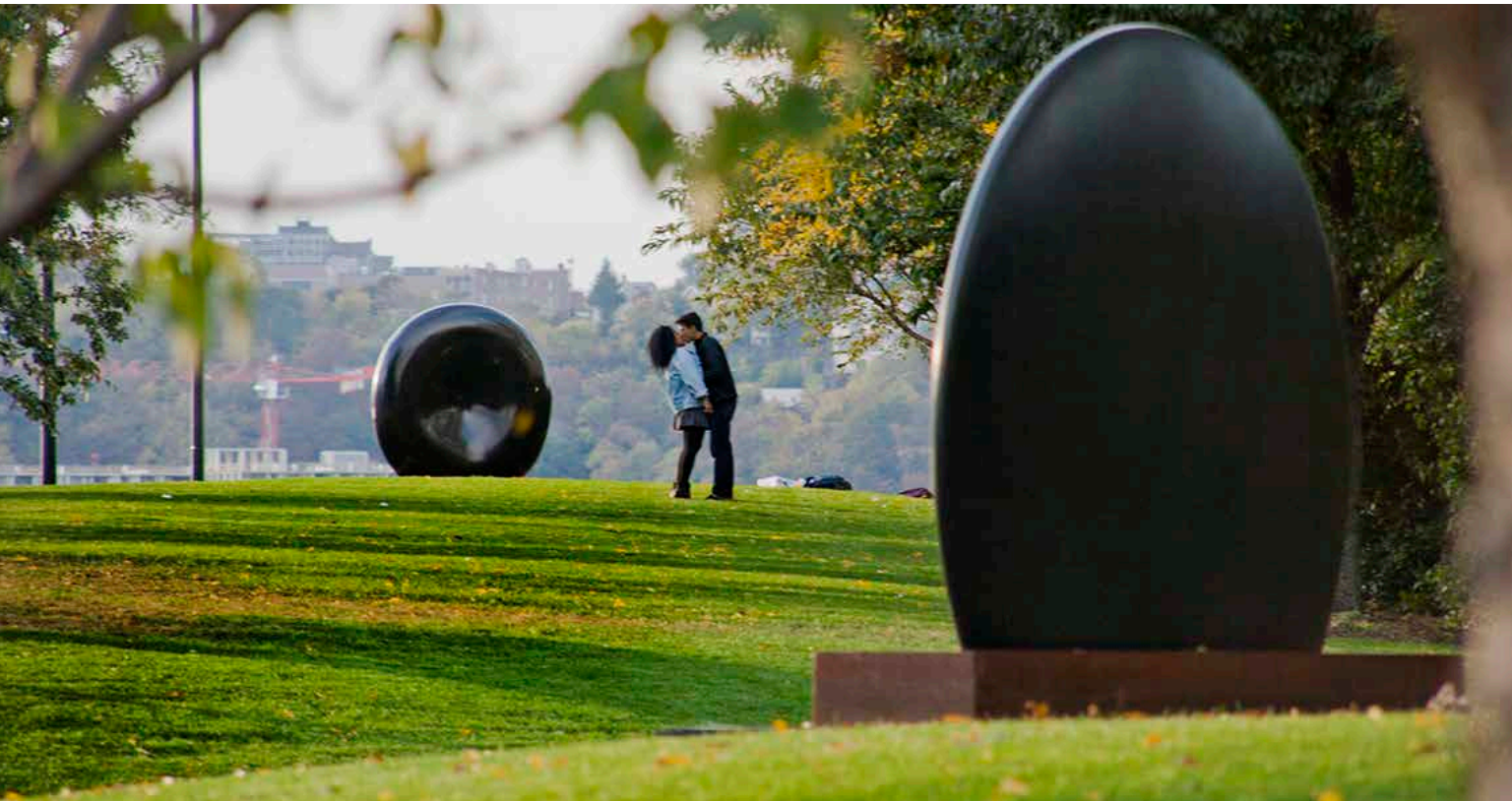
Jonathan Prince, G2V, Dag Hammarskjold Plaza, NYC

WE ORGANIZE

public art exhibitions

CYNTHIA-REEVES

212.714.0044 cynthia-reeves.com



Jonathan Prince, *Umbra*, African granite and Cor-Ten steel, Hudson River Park, NYC

WE ORGANIZE

public art exhibitions



George Sherwood, Hudson River Park, NYC

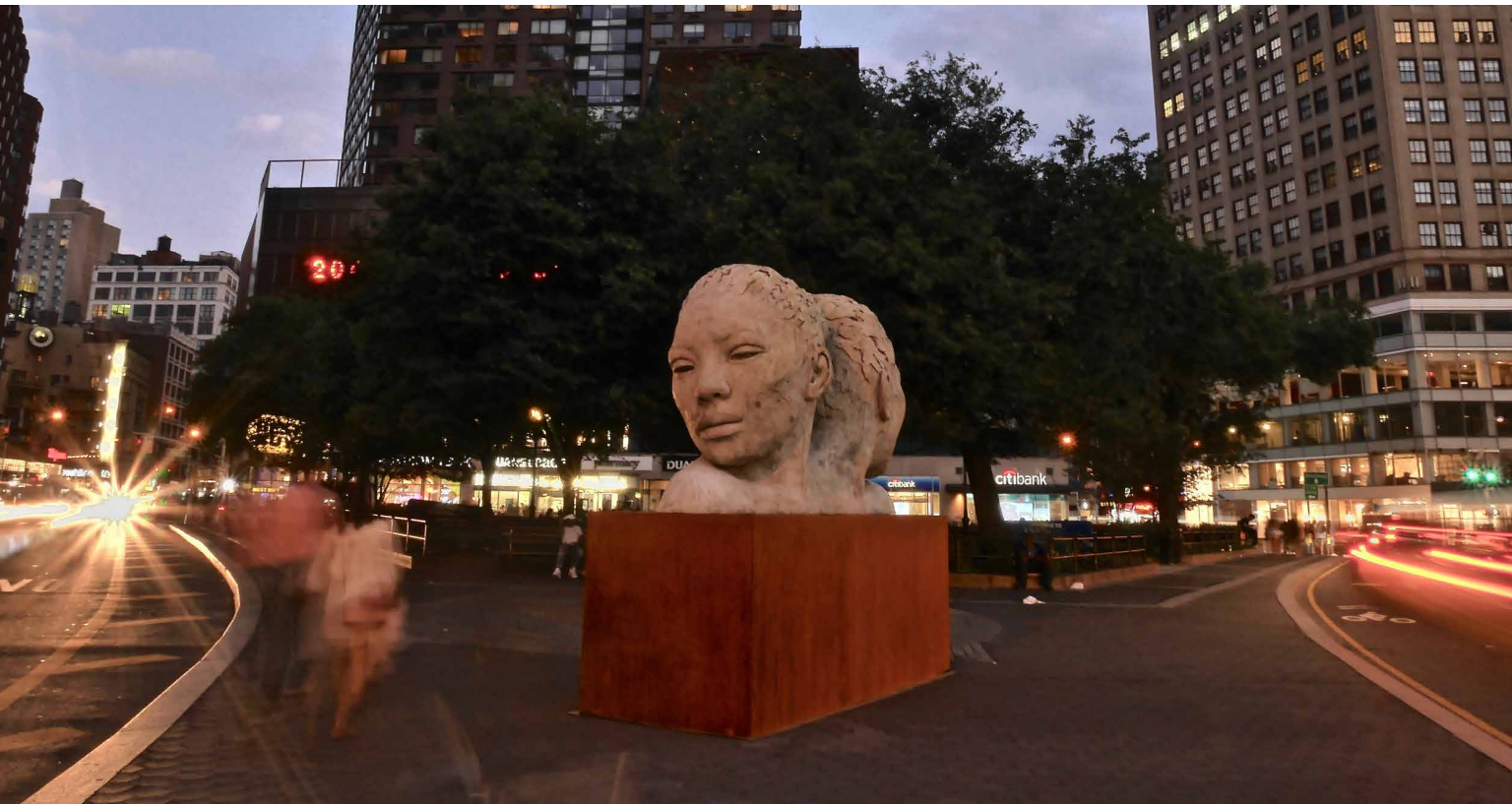


WE ORGANIZE

public art exhibitions

CYNTHIA-REEVES

212.714.0044 cynthia-reeves.com



Lionel Smit, *Morphous*, Union Square Park, NYC

WE ORGANIZE

public art exhibitions



Sibylle Pasche, Carrara marble, public art installation

WE ORGANIZE

public art exhibitions

CYNTHIA-REEVES

212.714.0044 cynthia-reeves.com



Jonathan Prince, *Southern Remnant*, Madison Avenue, NYC

WE ORGANIZE

public art exhibitions

CYNTHIA-REEVES

212.714.0044 cynthia-reeves.com



Shuli Sadé, corporate commission, Philadelphia, PA

WE COMMISSION

bespoke architectural designs

CYNTHIA-REEVES

212.714.0044 cynthia-reeves.com



Jonathan Prince, *Wave Form*, wall cladding, stainless steel and patinated steel

WE COMMISSION

bespoke architectural designs

CYNTHIA-REEVES

212.714.0044 cynthia-reeves.com



JongRye Cha, wall cladding, wood

WE COMMISSION

bespoke architectural designs

WE HAVE A GREAT TEAM

CYNTHIA REEVES

creative director

SARA MINTZ

client relations

AZARIAH AKER

logistics coordinator

ANNE LAWSON

public art projects

JOEY MORGAN

graphic consultant / design

KRISTEN JUSSILA

marketing / design

SARAH AMOS (AUSTRALIAN)

JENNIFER CAINE (AMERICAN)

SHEN CHEN (CHINESE)

JONGRYE CHA (KOREAN)

JANET ECHELMAN (AMERICAN)

LORRIE FREDETTE (AMERICAN)

BETH GALSTON (AMERICAN)

ANITA GLESTA (AMERICAN)

JOHN GRADE (AMERICAN)

DANIEL KOHN (INDIAN)

JAEHYO LEE (KOREAN)

ANNE LINDBERG (AMERICAN)

ALEXANDER MIJARES (CUBAN)

SIBYLLE PASCHE (SWISS)

MABEL POBLET (CUBAN)

JONATHAN PRINCE (AMERICAN)

SHULI SADÉ (ISRAELI)

GEORGE SHERWOOD (AMERICAN)

STEVEN SIEGEL (AMERICAN)

LIONEL SMIT (SOUTH AFRICAN)